

# ASTRO//EC®



## SPRAY GUNS

Novemila Top Line series	4
Seimila series	9
OM - IM - UR PLUS series	12
Graphic series	16
Special series	19
Low pressure series	22
Main spray gun spare parts	24
Painting accessories	31

## PRESSURIZED CONTAINERS

SSP and accessories	36
---------------------	----

## COMPRESSED AIR GUNS

Blow guns	40
Inflating guns	48
Washing guns	52
Sandblasting guns	54
Guns for protective and sealant compounds	57
Grease guns	60
Vacuum Cleaner	62

## PNEUMATIC TOOLS

Pneumatic tools	63
-----------------	----

## COUPLINGS AND PLUGS

X300 U	67
X300	68
X400	69
X100 S	70
X90	71
Steel plugs	72

## FITTINGS

Sliding and drain cocks	74
Connections	74-76
Fittings	77-79

### Accessories for pneumatics

Needle air line taps	80
Mini ball valves	80
Quick fittings	81
Connections with ferrules	82
Automatic fittings	83-84

### Modular filters regulators lubricators

Filters	85
---------	----

### Manometer and air compressed accessories

Manometers and accessories	87
----------------------------	----

### Hoses

Hoses	89
-------	----

## HOBBY LINE

PRIMA and spare parts	94
Compressed air guns	95

### Blister

Paint Spray guns	97
Air compressed guns	98-100
Pneumatic Tools	100-101
5 pieces Kit	102
6 pieces Kit - Air compressor accessories	103
Automatic quick couplings and plugs	104-105
Fittings	106-108

## DISPLAYS

Displays	109
----------	-----

## KEY OF THE SYMBOLS USED:



body shop



building



touch-up



decoration



industry



woodworking



D.I.Y.



# MEN AND PRODUCTS SERVICING THE MARKET



Walmec and the market, an association that has lasted for almost seventy years since, in 1945, a resourceful craftsman marked history with a painting system that is still the foundation of our rich catalogue; an association made up of dialogues, meetings, innovations and, above all, the will to grow together, Walmec and the market.

New products and more: reliability, quality and service; because being on the market not only means listening and meeting new demands, but also the ability to offer innovation at the right conditions, at the right time, with the required features and expected quality.

Service and quality, reliability and dynamics, the “mission” that drives Walmec; “mission” that the entire organisation industriously and daily strives to fulfil for the sole purpose of maintaining the market leadership the company has always enjoyed over all these years.

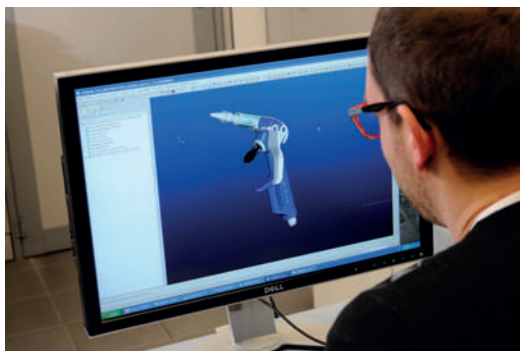
UNI EN ISO 9001:2008 quality certification, which has accompanied Walmec in this journey in the compressed air world since 1996, summarised the professionalism and sincerity with which the company and its employees work each day: designing and manufacturing its products in the S. Lucia di Piave (TV) and Calcio (BG) facilities, thus offering the market a strictly MADE IN ITALY range of products.

For us, manufacturing in Italy means protecting a know-how that belongs to these brands, to these workers, to this market since 1945.

Quality, reliability, service, capacity, reactivity: indispensable values, values rooted in our land, values that we proudly convey each day to all those who, with their trust, know how to appreciate them.

Behind this catalogue is tradition, innovation, self-sacrifice and determination; there’s the determination of a company to demonstrate that sincerity is worth more than a discount; there’s the pride of over 100 people working for the market.





Walmec S.p.A. is UNI EN ISO 9001:2008 certified with certificate nr. 343/96/S.





# NOVEMILA Top Line series

A wide range of professional spray guns including HVLP, HTE and Special Series systems.

The HVLP version, enhanced and enriched by the new high pulverising "TOP HVLP" cap, offers high performance in terms of fan and atomization while still maintaining the HVLP work parameters (0,7 bar output at cap, transfer efficiency > 65%). Equipped with a pressure regulator and pressure gauge for correct spray gun use according to regulatory standards.

The reduced air consumption, just over 200 l/min, combined with 25% higher savings than more traditional systems, make this spray gun one of the most popular and appreciated on the market.

The HTE version, equipped with a new highly pulverising "TOP HTE" cap, still working at pressures higher than the HVLP system, maintains the reduced air consumption and high transfer efficiency features.

Furthermore, the new cap improves fan and product atomization performance.

The versatility of this spray gun allows for its use in various sectors where a high level of paint product atomization is required.

The product passage made of stainless steel allows for the use of water-based paints, increasingly more popular on the market.

The range also includes a series of spray guns dedicated to Special applications for use in various and critical sectors: from construction to furniture manufacture, from woodworks to the nautical sector.

Glue, mural paints, Gel-coat tixotropic products are just some examples of products that can be applied with these spray guns.

**GEL COAT**

**9011 GEL COAT**  
Ref. 255

**HD**  
Pressurised tank for dense product application in general and especially for tixotropic paints for the woodworks sector.

**9011 HD**  
Ref. 233

**9010/SP COLLA**  
Ref. 253

**GLUE**  
Reinforced spring for better hold in glue application in the furniture manufacturing sector.

**9010 ECOMIX**  
Ref. 250

**ECOMIX**  
Regulator for better pressure dosage in the mural product application phase.

**9011 HVLP**  
Ref. 210

**PACKAGING**  
All spray guns of the Novemila series are supplied in handy rigid plastic suitcases containing all the accessories for a correct cleaning and maintenance.

## 9011 HVLP (with 680 cc nylon tank) - Ref. 210\*\*

Body: chemical nickel-plated polished aluminium  
TOP HVLP Cap: chemical nickel-plated brass  
Needle-spring-nozzle: stainless steel  
Adjustments: air-product-fan  
Weight: 940 g

Working pressure: 2,0 bar  
Air consumption: 220 l/min.  
Nozzle Ø: 1,3 - 1,5 - 1,7 - 1,9 - 2,2 - 2,5

**Air inlet pressure regulator with pressure gauge**

500 cc aluminium tank version	(Weight: 835 g)	Ref. 211**
1000 cc aluminium tank version	(Weight: 880 g)	Ref. 212**



NOTE:  
add nozzle Ø to Ref. (\*\*)

Recommended use:



## 9010 HVLP Ref. 215\*\*

Camlock suction cup: aluminium 1000 cc  
Body: chemical nickel-plated polished aluminium  
TOP HVLP Cap: chemical nickel-plated brass  
Needle-spring-nozzle: stainless steel  
Adjustments: air-product-fan  
Weight: 1,15 Kg

Working pressure: 2,0 bar  
Air consumption: 220 l/min.  
Nozzle Ø: 1,5 - 1,7 - 1,9 - 2,2 - 2,5

**Air inlet pressure regulator with pressure gauge**



NOTE:  
add nozzle Ø to Ref. (\*\*)

Recommended use:



## 9010 HVLP Ref. 216\*\*

Bayonet suction cup: aluminium 1000 cc  
Body: chemical nickel-plated polished aluminium  
TOP HVLP Cap: chemical nickel-plated brass  
Needle-spring-nozzle: stainless steel  
Adjustments: air-product-fan  
Weight: 1,18 Kg

Working pressure: 2,0 bar  
Air consumption: 220 l/min.  
Nozzle Ø: 1,5 - 1,7 - 1,9 - 2,2 - 2,5

**Air inlet pressure regulator with pressure gauge**



NOTE:  
add nozzle Ø to Ref. (\*\*)

Recommended use:



## 9010/SP HVLP Ref. 217\*\*

To be used through pressurized containers, low pressure pumps - Product inlet M1/4"  
Body: chemical nickel-plated polished aluminium  
TOP HVLP Cap: chemical nickel-plated brass  
Needle-spring-nozzle: stainless steel  
Adjustments: air-product-fan  
Weight: 755 g

Working pressure: 2,0 bar  
Air consumption: 220 l/min.  
Nozzle Ø: 1,0 - 1,3 - 1,5 - 1,7 - 1,9 - 2,2 - 2,5

**Air inlet pressure regulator with pressure gauge**



NOTE:  
add nozzle Ø to Ref. (\*\*)

Recommended use:





## 9011 HTE

(with 680 cc nylon tank) - Ref. 230\*\*

Body: chemical nickel-plated polished aluminium  
TOP HTE Cap: chemical nickel-plated brass  
Needle-spring-nozzle: stainless steel  
Adjustments: air-product-fan  
Weight: 755 g

Working pressure: 2,5 - 3,0 bar  
Air consumption: 180 - 220 l/min.  
Nozzle Ø: 1,3 - 1,5 - 1,7 - 1,9 - 2,2 - 2,5

500 cc aluminium tank version	(Weight: 670 g)	Ref. 231**
1000 cc aluminium tank version	(Weight: 720 g)	Ref. 232**



NOTE:  
add nozzle Ø to Ref. (\*\*)

Recommended use:



## 9010 HTE

Ref. 235\*\*

Camlock suction cup: aluminium 1000 cc  
Body: chemical nickel-plated polished aluminium  
TOP HTE Cap: chemical nickel-plated brass  
Needle-spring-nozzle: stainless steel  
Adjustments: air-product-fan  
Weight: 990 g

Working pressure: 2,5 - 3,0 bar  
Air consumption: 220 - 240 l/min.  
Nozzle Ø: 1,3 - 1,5 - 1,7 - 1,9 - 2,2 - 2,5



NOTE:  
add nozzle Ø to Ref. (\*\*)

Recommended use:



## 9010 HTE

Ref. 236\*\*

Bayonet suction cup: aluminium 1000 cc  
Body: chemical nickel-plated polished aluminium  
TOP HTE Cap: chemical nickel-plated brass  
Needle-spring-nozzle: stainless steel  
Adjustments: air-product-fan  
Weight: 920 g

Working pressure: 2,5 - 3,0 bar  
Air consumption: 220 - 240 l/min.  
Nozzle Ø: 1,3 - 1,5 - 1,7 - 1,9 - 2,2 - 2,5



NOTE:  
add nozzle Ø to Ref. (\*\*)

Recommended use:



## 9010/SP HTE

Ref. 237\*\*

To be used through pressurized containers, low pressure pumps - Product inlet M1/4"  
Body: chemical nickel-plated polished aluminium  
TOP HTE Cap: chemical nickel-plated brass  
Needle-spring-nozzle: stainless steel  
Adjustments: air-product-fan  
Weight: 590 g

Working pressure: 2,5 - 3,0 bar  
Air consumption: 220 - 240 l/min.  
Nozzle Ø: 1,0 - 1,3 - 1,5 - 1,7 - 1,9 - 2,2 - 2,5



NOTE:  
add nozzle Ø to Ref. (\*\*)

Recommended use:



## 9010 ECOMIX

Ref. 250\*\*

Adjustable suction pressure bayonet tank: 1000 cc stainless steel  
Body: chemically nickel plated polished aluminium  
Cap: chemically nicked brass  
Needle-nozzle-springs: stainless steel  
Adjustments: air-product-fan  
Cup gasket: o-ring in EPDM  
Use: application of wall paints in the building sector  
Weight: 940 g

Working pressure: 2,5 - 3,0 bar  
Air consumption: 200 - 240 l/min.  
Nozzle Ø: 2,2 - 2,5 - 3,0

**Equipped with regulator group of the air inlet flow and air pressure to the tank**



NOTE:  
add nozzle Ø to Ref. (\*\*)

Recommended use:



## 9010/SP ECOMIX

Ref. 251\*\*

To be used through pressurized containers, low pressure pumps - Product inlet M1/4"  
Body: chemically nickel plated polished aluminium  
Cap: chemically nicked brass  
Needle-nozzle-springs: stainless steel  
Adjustments: air-product-fan  
Use: application of wall paints in the building sector  
Weight: 610 g

Working pressure: 2,5 - 3,0 bar  
Air consumption: 200 - 240 l/min.  
Nozzle Ø: 2,2 - 2,5 - 3,0



NOTE:  
add nozzle Ø to Ref. (\*\*)

Recommended use:



## 9011 HD

(with 680 cc nylon tank) - Ref. 233\*\*

Pressurised gravity tank (M 1/4" product inlet): for high density products such as latex, polyurethane, gel coat, tixotropic products in the wood and industrial sectors  
Body: chemically nickel plated polished aluminium  
Cap: chemically nicked brass  
Needle-nozzle-springs: stainless steel  
Adjustments: air-product-fan  
Weight: 1,25 Kg

Working pressure: 2,5 - 3,0 bar  
Air consumption: 220 - 240 l/min.  
Nozzle Ø: 1,5 - 1,9 - 2,2 - 2,5

**Double spray gun air inlet pressure regulator and pressurised tank with pressure gauge**



NOTE:  
add nozzle Ø to Ref. (\*\*)

Recommended use:



## 9010/SP COLLA

Ref. 253\*\*

To be used through pressurized containers, low pressure pumps - Product inlet M1/4"  
Body: chemically nickel plated polished aluminium  
Cap: chemically nicked brass  
Needle-nozzle-springs: stainless steel  
Adjustments: product-fan  
Nozzle Ø: 590 g

Working pressure: 2,5 - 3,0 bar  
Air consumption: 180 - 240 l/min.  
Nozzle Ø: 1,7 - 1,9



NOTE:  
add nozzle Ø to Ref. (\*\*)

Recommended use:





## 9011 GEL COAT

Ref. 255\*\*

Tank: nylon 680 cc  
Body: chemical nickel-plated polished aluminium  
Cap: chemical nickel-plated brass  
Needle-spring-nozzle: stainless steel  
Adjustments: air-product-fan  
Use: for application of Gel Coat and dense products generally  
Weight: 810 g

Working pressure: 2,5 - 3,0 bar  
Air consumption: 180 - 220 l/min.  
Nozzle Ø: 3,0 - 4,0 - 5,0



NOTE:  
add nozzle Ø to Ref. (\*\*)

Recommended use:



## 9010/SP GEL COAT

Ref. 256\*\*

To be used through pressurized containers, low pressure pumps - Product inlet M1/4"  
Body: chemical nickel-plated polished aluminium  
Cap: chemical nickel-plated brass  
Needle-spring-nozzle: stainless steel  
Adjustments: air-product-fan  
Use: for application of Gel Coat and dense products generally  
Weight: 590 g

Working pressure: 2,0 - 3,0 bar  
Air consumption: 180 - 240 l/min.  
Nozzle Ø: 3,0 - 4,0 - 5,0



NOTE:  
add nozzle Ø to Ref. (\*\*)

Recommended use:



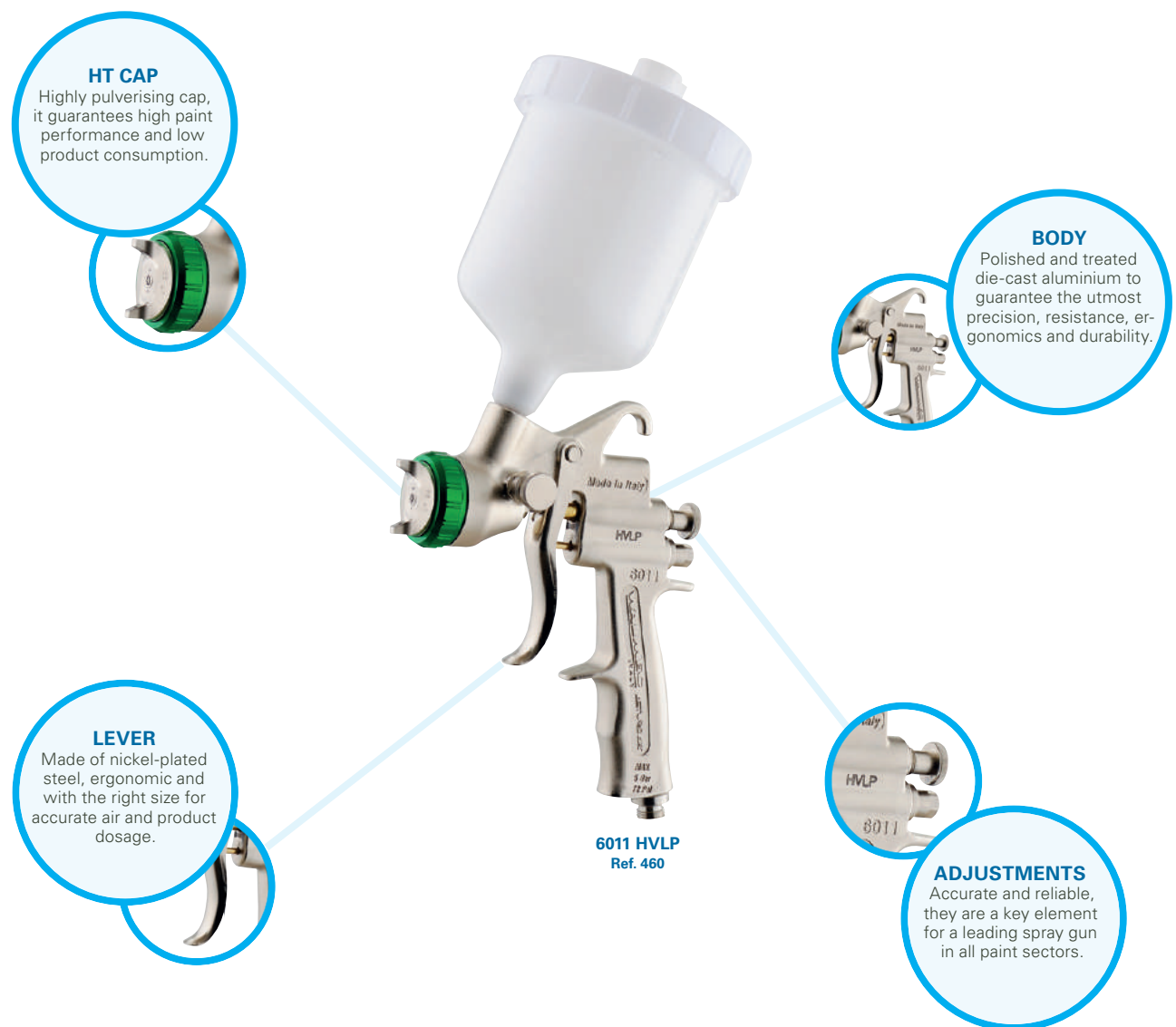
# SEIMILA series

The new line of high performance spray guns in terms of both fan and atomization and durability and reliability. Manufactured with all of Asturomec®'s experience as a guarantee, they are the maximum expression of an ideal spray gun for all sectors that require quality paint results associated with efficiency.

From bodyworks to woodworks, industry and crafts, the new SEIMILA series was specifically designed to fully enhance the operator's work.

Available in the HVLP version (0,7 bar at cap; transfer efficiency > 65%) and HTE version, this spray gun comes with a highly pulverising HT cap and is built to resist aggression from all types of solvents.

The lack of gaskets, thanks to high precision mechanical processing, guarantees that highly desired durability appreciated by operators in the various reference sectors.





## 6011 HVLP (with 680 cc nylon tank) - Ref. 460\*\*

Body: polished and treated aluminium  
HT CAP: nickel-plated brass  
Needle-spring-nozzle: stainless steel  
Adjustments: product-fan  
Weight: 755 g

Working pressure: 2,5 - 3,0 bar  
Air consumption: 180 - 220 l/min.  
Nozzle Ø: 1,2 - 1,4 - 1,7 - 1,9 - 2,2 - 2,5 - 3,0

500 cc aluminium tank version	(Weight: 670 g)	Ref. 461**
1000 cc aluminium tank version	1000 cc (Weight: 720 g)	Ref. 462**



NOTE:  
add nozzle Ø to Ref. (\*\*)

Recommended use:



## 6010 HVLP Ref. 465\*\*

Camlock suction cup: aluminium 1000 cc  
Body: polished and treated aluminium  
HT CAP: nickel-plated brass  
Needle-spring-nozzle: stainless steel  
Adjustments: product-fan  
Weight: 990 g

Working pressure: 2,5 - 3,0 bar  
Air consumption: 220 - 240 l/min.  
Nozzle Ø: 1,2 - 1,4 - 1,7 - 1,9 - 2,2 - 2,5 - 3,0



NOTE:  
add nozzle Ø to Ref. (\*\*)

Recommended use:



## 6010 HVLP Ref. 466\*\*

Bayonet suction cup: aluminium 1000 cc  
Body: polished and treated aluminium  
HT CAP: nickel-plated brass  
Needle-spring-nozzle: stainless steel  
Adjustments: product-fan  
Weight: 920 g

Working pressure: 2,5 - 3,0 bar  
Air consumption: 220 - 240 l/min.  
Nozzle Ø: 1,2 - 1,4 - 1,7 - 1,9 - 2,2 - 2,5 - 3,0



NOTE:  
add nozzle Ø to Ref. (\*\*)

Recommended use:



## 6010/SP HVLP Ref. 467\*\*

To be used through pressurized containers, low pressure pumps - Product inlet M1/4"  
Body: polished and treated aluminium  
HT CAP: nickel-plated brass  
Needle-spring-nozzle: stainless steel  
Adjustments: product-fan  
Weight: 590 g

Working pressure: 2,5 - 3,0 bar  
Air consumption: 220 - 240 l/min.  
Nozzle Ø: 1,2 - 1,4 - 1,7 - 1,9 - 2,2 - 2,5 - 3,0



NOTE:  
add nozzle Ø to Ref. (\*\*)

Recommended use:



## 6011 HTE

(with 680 cc nylon tank) - Ref. 470\*\*

Body: polished and treated aluminium  
HT CAP: nickel-plated brass  
Needle-spring-nozzle: stainless steel  
Adjustments: product-fan  
Weight: 755 g

Working pressure: 2,5 - 3,0 bar  
Air consumption: 180 - 220 l/min.  
Nozzle Ø: 1,2 - 1,4 - 1,7 - 1,9 - 2,2 - 2,5 - 3,0

500 cc aluminium tank version	(Weight: 670 g)	Ref. 471**
1000 cc aluminium tank version	1000 cc (Weight: 720 g)	Ref. 472**



NOTE:  
add nozzle Ø to Ref. (\*\*)

Recommended use:



## 6010 HTE

Ref. 475\*\*

Camlock suction cup: aluminium 1000 cc  
Body: polished and treated aluminium  
HT CAP: nickel-plated brass  
Needle-spring-nozzle: stainless steel  
Adjustments: product-fan  
Weight: 990 g

Working pressure: 2,5 - 3,0 bar  
Air consumption: 220 - 240 l/min.  
Nozzle Ø: 1,2 - 1,4 - 1,7 - 1,9 - 2,2 - 2,5 - 3,0



NOTE:  
add nozzle Ø to Ref. (\*\*)

Recommended use:



## 6010 HTE

Ref. 476\*\*

Bayonet suction cup: aluminium 1000 cc  
Body: polished and treated aluminium  
HT CAP: nickel-plated brass  
Needle-spring-nozzle: stainless steel  
Adjustments: product-fan  
Weight: 920 g

Working pressure: 2,5 - 3,0 bar  
Air consumption: 220 - 240 l/min.  
Nozzle Ø: 1,2 - 1,4 - 1,7 - 1,9 - 2,2 - 2,5 - 3,0



NOTE:  
add nozzle Ø to Ref. (\*\*)

Recommended use:



## 6010/SP HTE

Ref. 477\*\*

To be used through pressurized containers, low pressure pumps - Product inlet M1/4"  
Body: polished and treated aluminium  
HT CAP: nickel-plated brass  
Needle-spring-nozzle: stainless steel  
Adjustments: product-fan  
Weight: 590 g

Working pressure: 2,5 - 3,0 bar  
Air consumption: 220 - 240 l/min.  
Nozzle Ø: 1,2 - 1,4 - 1,7 - 1,9 - 2,2 - 2,5 - 3,0



NOTE:  
add nozzle Ø to Ref. (\*\*)

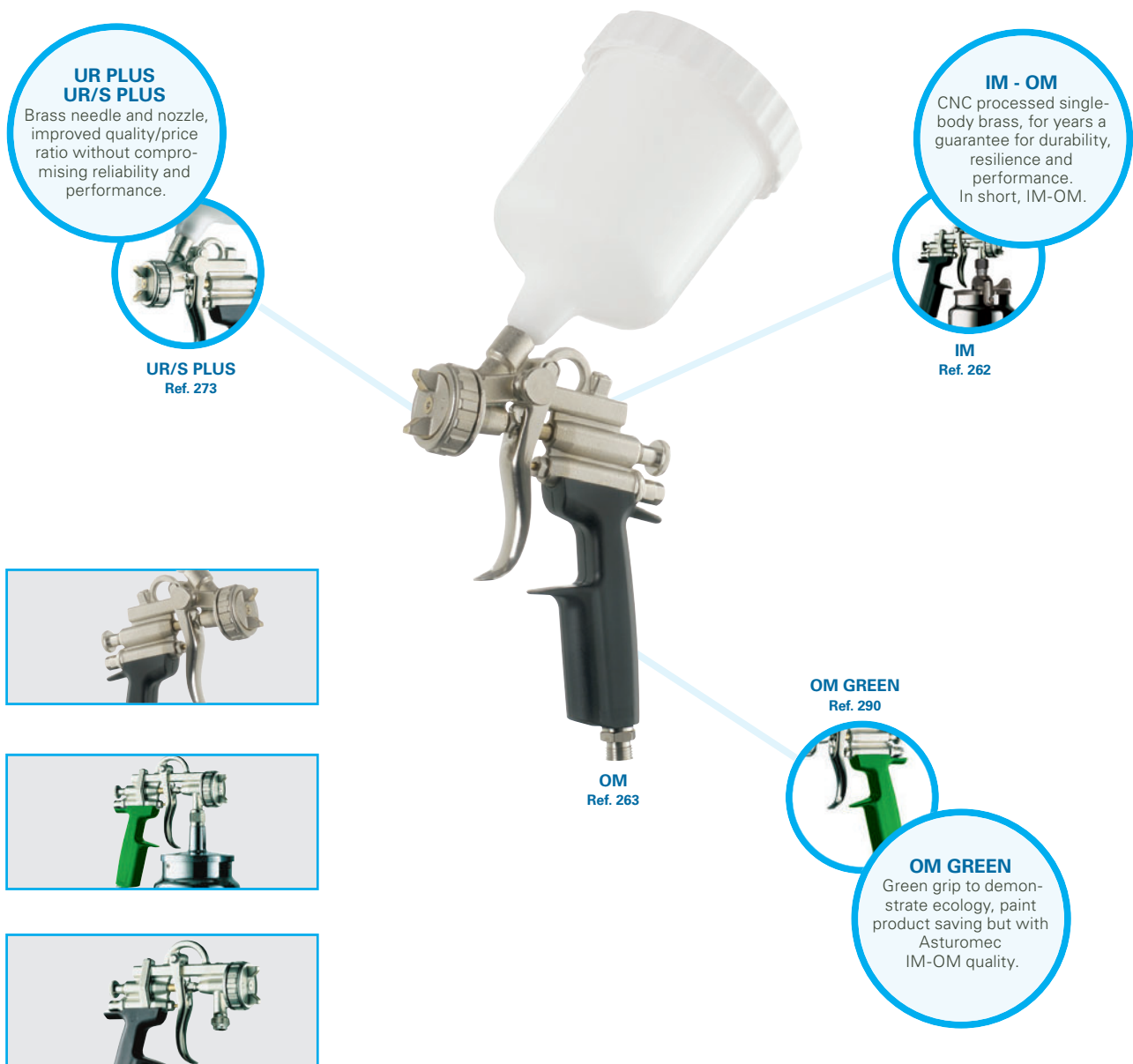
Recommended use:



# OM-IM-UR PLUS series

Spray guns designed to combine reliability, versatility and price. Their strength has made them the market leaders since their launch in the 50s. But the strength of a product can be seen by the way it develops, so, in 1999, the HVLP version of the OM was created to meet the needs of the most sensitive markets in terms of product saving and environmental regulations.

The professional IM/OM version originated the creation of the UR PLUS version, with brass components which, considering the quality/price ratio, makes the product also suitable for D.I.Y.





## OM GREEN (with 680 cc nylon tank) - Ref. 290\*\*

Body: nickel-plated sanded brass  
Cap: nickel-plated brass  
Needle-nozzle-springs: stainless steel  
Adjustments: product-fan  
Weight: 780 g

Working pressure: 2,0 bar  
Air consumption: 200 l/min.  
Nozzle Ø: 1,4 - 1,7 - 1,9 - 2,2

**HVLP system: low overspray, significant paint product savings**

250 cc nylon tank version	(Weight: 670 g)	Ref. 291**
500 cc aluminium tank version	(Weight: 680 g)	Ref. 292**
1000 cc aluminium tank version	(Weight: 730 g)	Ref. 293**



NOTE:  
add nozzle Ø to Ref. (\*\*)

Recommended use:



## IM GREEN Ref. 307\*\*

Camlock suction cup: aluminium 1000 cc  
Body: nickel-plated sanded brass  
Cap: nickel-plated brass  
Needle-nozzle-springs: stainless steel  
Adjustments: product-fan  
Weight: 1,01 Kg

Working pressure: 2,0 bar  
Air consumption: 200 l/min.  
Nozzle Ø: 1,4 - 1,7 - 1,9 - 2,2

**HVLP system: low overspray, significant paint product savings**



NOTE:  
add nozzle Ø to Ref. (\*\*)

Recommended use:



## IM GREEN Ref. 308\*\*

Bayonet suction cup: aluminium 1000 cc  
Body: nickel-plated sanded brass  
Cap: nickel-plated brass  
Needle-nozzle-springs: stainless steel  
Adjustments: product-fan  
Weight: 950 g

Working pressure: 2,0 bar  
Air consumption: 200 l/min.  
Nozzle Ø: 1,4 - 1,7 - 1,9 - 2,2

**HVLP system: low overspray, significant paint product savings**



NOTE:  
add nozzle Ø to Ref. (\*\*)

Recommended use:



## IM/SP GREEN Ref. 309\*\*

To be used through pressurized containers, low pressure pumps - Product inlet M1/4"  
Body: nickel-plated sanded brass  
Cap: nickel-plated brass  
Needle-nozzle-springs: stainless steel  
Adjustments: product-fan  
Weight: 620 g

Working pressure: 2,0 bar  
Air consumption: 200 l/min.  
Nozzle Ø: 1,4 - 1,7 - 1,9 - 2,2

**HVLP system: low overspray, significant paint product savings**



NOTE:  
add nozzle Ø to Ref. (\*\*)

Recommended use:



## OM

(with 680 cc nylon tank) - Ref. 263\*\*

Body: nickel-plated sanded brass  
Cap: nickel-plated brass  
Needle-nozzle-springs: stainless steel  
Adjustments: product-fan  
Weight: 780 g

Working pressure: 3,0 - 3,5 bar  
Air consumption: 220 l/min.  
Nozzle Ø: 1,0 - 1,2 - 1,4 - 1,7 - 1,9 - 2,2 - 2,5 - 3,0 - 3,5 - 4,0

250 cc nylon tank version (Weight: 670 g) Ref. 264\*\*

500 cc aluminium tank version (Weight: 680 g) Ref. 266\*\*

1000 cc aluminium tank version (Weight: 730 g) Ref. 265\*\*



NOTE:  
add nozzle Ø to Ref. (\*\*)

Recommended use:



## IM

Ref. 262\*\*

Camlock suction cup: aluminium 1000 cc  
Body: nickel-plated sanded brass  
Cap: nickel-plated brass  
Needle-nozzle-springs: stainless steel  
Adjustments: product-fan  
Weight: 1,01 Kg

Working pressure: 3,0 - 3,5 bar  
Air consumption: 200 - 350 l/min.  
Nozzle Ø: 1,2 - 1,4 - 1,7 - 1,9 - 2,2 - 2,5 - 3,0



NOTE:  
add nozzle Ø to Ref. (\*\*)

Recommended use:



## IM

Ref. 260\*\*

Bayonet suction cup: aluminium 1000 cc  
Body: nickel-plated sanded brass  
Cap: nickel-plated brass  
Needle-nozzle-springs: stainless steel  
Adjustments: product-fan  
Weight: 950 g

Working pressure: 3,0 - 3,5 bar  
Air consumption: 200 - 350 l/min.  
Nozzle Ø: 1,2 - 1,4 - 1,7 - 1,9 - 2,2 - 2,5 - 3,0



NOTE:  
add nozzle Ø to Ref. (\*\*)

Recommended use:



## IM/SP

Ref. 269\*\*

To be used through pressurized containers, low pressure pumps - Product inlet M1/4"  
Body: nickel-plated sanded brass  
Cap: nickel-plated brass  
Needle-nozzle-springs: stainless steel  
Adjustments: product-fan  
Weight: 620 g

Working pressure: 3,0 - 3,5 bar  
Air consumption: 200 - 350 l/min.  
Nozzle Ø: 1,2 - 1,4 - 1,7 - 1,9 - 2,2 - 2,5 - 3,0



NOTE:  
add nozzle Ø to Ref. (\*\*)

Recommended use:



**UR/S PLUS** (with 680 cc nylon tank) - Ref. 273\*\*

Body: nickel-plated sanded brass  
 Cap: nickel-plated brass  
 Needle-nozzle: brass  
 Adjustments: product-fan  
 Weight: 795 g

Working pressure: 3,0 - 3,5 bar  
 Air consumption: 200 - 350 l/min.  
 Nozzle Ø: 1,2 - 1,4 - 1,7 - 1,8 - 1,9 - 2,2 - 2,5 - 3,0

250 cc nylon tank version	(Weight: 670 g)	Ref. 274**
500 cc aluminium tank version	(Weight: 680 g)	Ref. 276**
1000 cc aluminium tank version	(Weight: 730 g)	Ref. 275**



NOTE:  
 add nozzle Ø to Ref. (\*\*)

Recommended use:

**UR PLUS** Ref. 272\*\*

Camlock suction cup: aluminium 1000 cc  
 Body: nickel-plated sanded brass  
 Cap: nickel-plated brass  
 Needle-nozzle: brass  
 Adjustments: product-fan  
 Weight: 1,01 Kg

Working pressure: 3,0 - 3,5 bar  
 Air consumption: 200 - 350 l/min.  
 Nozzle Ø: 1,2 - 1,4 - 1,7 - 1,8 - 1,9 - 2,2 - 2,5 - 3,0



NOTE:  
 add nozzle Ø to Ref. (\*\*)

Recommended use:

**UR PLUS** Ref. 270\*\*

Bayonet suction cup: aluminium 1000 cc  
 Body: nickel-plated sanded brass  
 Cap: nickel-plated brass  
 Needle-nozzle: brass  
 Adjustments: product-fan  
 Weight: 950 g

Working pressure: 3,0 - 3,5 bar  
 Air consumption: 200 - 350 l/min.  
 Nozzle Ø: 1,2 - 1,4 - 1,7 - 1,8 - 1,9 - 2,2 - 2,5 - 3,0



NOTE:  
 add nozzle Ø to Ref. (\*\*)

Recommended use:

**UR PLUS/SP** Ref. 279\*\*

To be used through pressurized containers, low pressure pumps - Product inlet M1/4"  
 Body: nickel-plated sanded brass  
 Cap: nickel-plated brass  
 Needle-nozzle-springs: stainless steel  
 Adjustments: product-fan  
 Weight: 620 g

Working pressure: 3,0 - 3,5 bar  
 Air consumption: 200 - 350 l/min.  
 Nozzle Ø: 1,2 - 1,4 - 1,7 - 1,9 - 2,2 - 2,5 - 3,0



Recommended use:





# GRAPHIC series

Mini high-precision professional spray guns for applications on small surfaces.

The easy application and lightness of these spray guns make them ideal, besides for the industry also for body shops, woodworking.

Thanks to the high quality level this spray gun is also suitable for professional decorators and D.I.Y.

Available with a number of different sized cups according to the specific application.

The new RE version was designed to meet the ever-growing demands of the DIY market, combining the advantages of a quality mini spray gun with an undoubtedly competitive price.

## ES

Round jet cap for applications specific to industry, woodwork and crafts.

## ES

Ref. 330

## ES/RV

Ref. 340

## ES/RV

CNC processed body, highly pulverising cap, accurate and reliable, ES/RV is the professional mini spray gun recommended for all sectors.

## RE

Ref. 450

## RE

Blue grip that distinguishes the DIY version, with the Asturomec quality guarantee.

## ES/RV

Ref. 340

## PACKAGING

Packaging designed to contain a complete set for the decorator. Available in a handy rigid plastic suitcase which allows an ideal set-up of the equipment.



## ES/RV

(with 250 cc nylon tank) - Ref. 340\*\*

Body: nickel-plated sanded brass  
Cap: nickel-plated brass  
Needle-nozzle-springs: stainless steel  
Adjustments: product-fan  
Weight: 475 g

Working pressure: 1,0 - 3,5 bar  
Air consumption: 30 - 60 l/min.  
Nozzle Ø: 0,5 - 0,7 - 1,0 - 1,2

75 cc nylon tank version	(Weight: 410 g)	Ref. 341**
125 cc aluminium tank version	(Weight: 425 g)	Ref. 343**



NOTE:  
add nozzle Ø to Ref. (\*\*)

Recommended use:



## ES

(with 250 cc nylon tank) - Ref. 330\*\*

Body: nickel-plated sanded brass  
Cap: nickel-plated brass  
Needle-nozzle-springs: stainless steel  
Adjustments: product  
Weight: 465 g

Working pressure: 1,0 - 3,5 bar  
Air consumption: 30 - 60 l/min  
Nozzle Ø: 0,3 - 0,5 - 0,7 - 1,0

75 cc nylon tank version	(Weight: 400 g)	Ref. 331**
125 cc aluminium tank version	(Weight: 415 g)	Ref. 333**

Versions with 0,3 nozzle Ø



NOTE:  
add nozzle Ø to Ref. (\*\*)

Recommended use:



## RE

(with 250 cc nylon tank) - Ref. 450\*\*

Body: sanded and galvanised Zama  
Cap: nickel-plated brass  
Needle-springs: stainless steel  
Adjustments: product  
Weight: 360 g

Working pressure: 1,0 - 3,5 bar  
Air consumption: 30 - 60 l/min  
Nozzle Ø: 0,3 - 0,5 - 0,7 - 1,0 - 1,2

75 cc nylon tank version	(Weight: 300 g)	Ref. 451**
125 cc aluminium tank version	(Weight: 320 g)	Ref. 452**

Versions with 0,3 nozzle Ø



NOTE:  
add nozzle Ø to Ref. (\*\*)

Recommended use:



## DECOR BAG

Ref. 39000

Kit for the professional decorator packed in suitcase.  
Featuring:  
1 airbrush GRAPHIQUE  
1 spray gun ES/RV Ø 0,5 with gravity nylon cup, capacity 75 cc  
1 needle - nozzle - cap kit Ø 0,3  
1 DECOR KIT  
1 air hose Ø 4x6, m 1,5 with fittings

Weight: 1,63 Kg  
Solid suitcase



NOTE:  
add nozzle Ø to Ref. (\*\*)

Recommended use:



## GRAPHIQUE

Ref. 39003

Professional double action airbrush for airwork and decorating.

Body: nickel-plated brass

Nozzle: stainless steel

Needle-springs-paint passage: stainless steel

Double cup: gravity cup in anodized aluminium capacity 4 cc  
suction cup in glass, capacity 20 cc

Featuring: fitting for hose Ø 4x6- service spanner - support

Weight: 300 g

Working pressure: 0,5-3,5 bar

Air consumption: 10-25 l/min.



Recommended use:



## DECOR KIT

Ref. 34500

Ideal for the simultaneous use of more than one product with spray gun EGO HVLP and GRAPHIQUE spray guns.

Featuring: 5 glass cups, capacity 20 cc  
unscrewable adaptor for EGO HVLP

Weight: 210 g



In order to clean your spray gun more rapidly, we suggest that you reserve a cup for the diluent.



Recommended use:





# SPECIAL series

G1 SERIES: Spray guns indicated for the application of high density products to obtain a high finish orange peel or sponge effect.

Recommended in all those sectors where a normal spray guns does not provide sufficient yield in spraying these products.

The stainless steel cup and NBR gaskets features make this product resistant to the most aggressive solvents and most improper maintenance.

The new regulator also guarantees constant cup pressure.

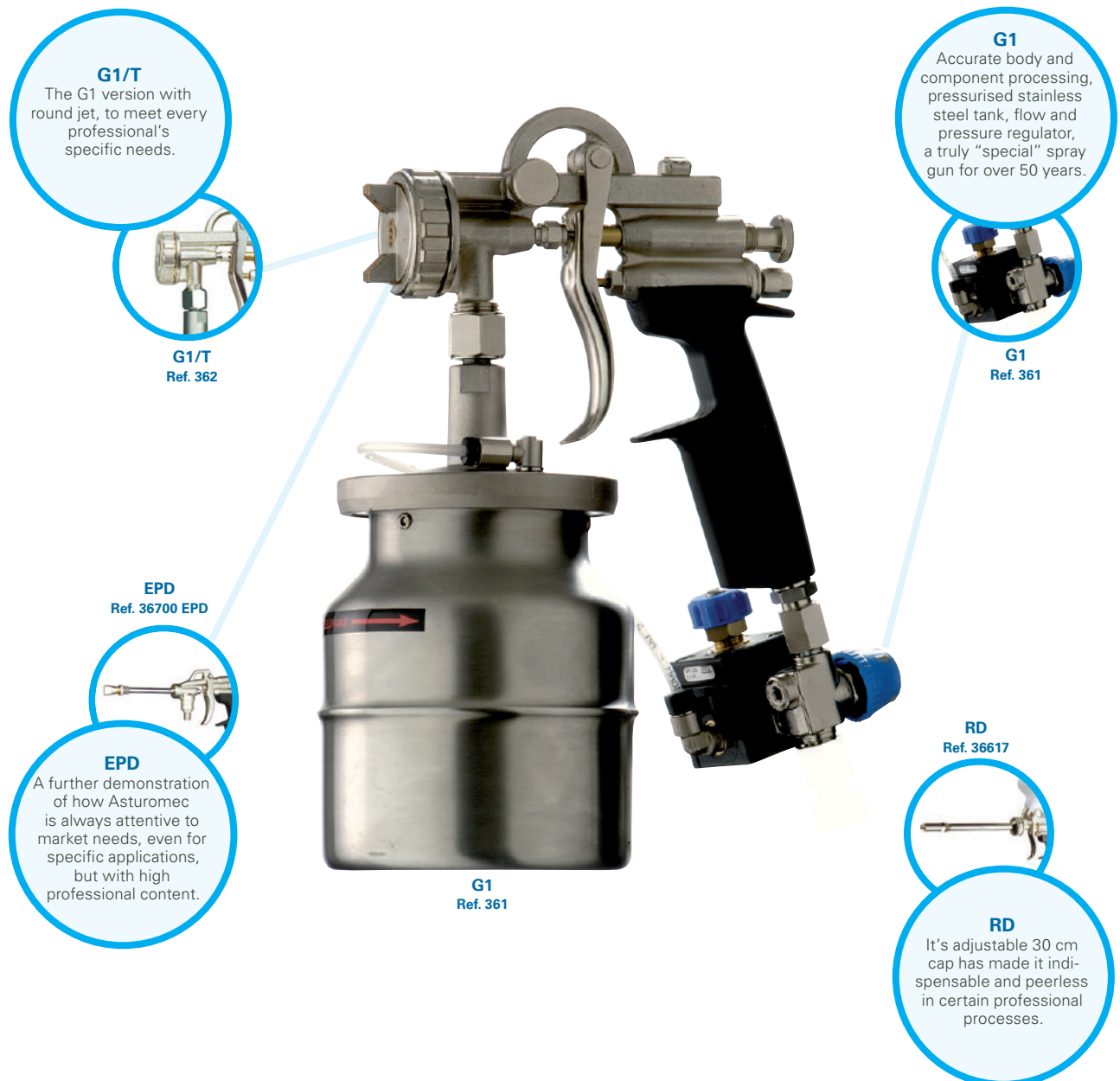
RD SERIES: Spray gun specific for the application of paint or rust-proofing products on hard to reach areas (such as radiators).

EPD SERIES: Pressurised air brush for dense products without atomisation air.

Ideal for glue, sealing and lubricants.

The special "flat or long spout" rods permit precise and efficient applications according to specific needs.

MM: Spray gun specific for plastic wall application.



## G1

Ref. 361\*\*

Adjustable suction pressure bayonet tank: 1000 cc stainless steel  
Body: nickel-plated sanded brass  
Cap: nickel-plated brass  
Needle-nozzle-springs: stainless steel  
Adjustments: product-fan  
Cup gasket: o-ring in NBR  
Equipped with regulator group of the air inlet and air pressure to the tank  
Weight: 1,7 Kg

Working pressure: MAX 3,0 bar  
Air consumption: 370 l/min.  
Nozzle Ø: 1,9 - 2,2 - 2,5



NOTE:  
add nozzle Ø to Ref. (\*\*)

Recommended use:



## G1/SP

Ref. 363\*\*

To be used through pressurized containers, low pressure pumps - Product inlet M1/4"  
Body: nickel-plated sanded brass  
Cap: nickel-plated brass  
Needle-nozzle-springs: stainless steel  
Adjustments: product-fan  
Weight: 620 g

Working pressure: MAX 3,0 bar  
Air consumption: 370 l/min.  
Nozzle Ø: 1,9 - 2,2 - 2,5



NOTE:  
add nozzle Ø to Ref. (\*\*)

Recommended use:



## G1/T

Ref. 362\*\*

Adjustable suction pressure bayonet tank: 1000 cc stainless steel  
Body: nickel-plated sanded brass  
Cap: nickel-plated brass  
Needle-nozzle-springs: stainless steel  
Adjustments: product  
Cup gasket: o-ring in NBR  
Equipped with regulator group of the air inlet and air pressure to the tank  
Round spray  
Weight: 1,67 Kg

Working pressure: MAX 3,0 bar  
Air consumption: 230 l/min.  
Nozzle Ø: 1,9 - 2,2 - 2,5



NOTE:  
add nozzle Ø to Ref. (\*\*)

Recommended use:



## G1/T SP

Ref. 364\*\*

To be used through pressurized containers, low pressure pumps - Product inlet M1/4"  
Body: nickel-plated sanded brass  
Cap: nickel-plated brass  
Needle-nozzle-springs: stainless steel  
Adjustments: product  
Round spray  
Weight: 620 g

Working pressure: MAX 3,0 bar  
Air consumption: 230 l/min.  
Nozzle Ø: 1,9 - 2,2 - 2,5



NOTE:  
add nozzle Ø to Ref. (\*\*)

Recommended use:



## RD

(with 680 cc nylon tank) - Ref. 36617

Body: nickel-plated sanded brass  
Cap: nickel-plated brass, swivelling 360° for lateral spraying  
Needle-nozzle-springs: stainless steel  
Adjustments: product -fan  
Weight: 1,05 Kg

Working pressure: 3,0 - 4,0 bar  
Air consumption: 130 - 200 l/min.  
Nozzle Ø: 1,7



Recommended use:



## EPD

Ref. 36700

Gun for pressurised dense products without atomization air.  
Ideal for glue, sealant and lubricants.  
Body: nickel-plated sanded brass  
Barrel: 100 mm with product blocking on the tip, equipped with interchangeable flat spout in metal  
Adjustments: product  
Weight: 370 g

Working pressure: MAX 3 bar  
Air consumption: 30 - 60 l/min.



Recommended use:



## EPD/L

Ref. 36800

Gun for pressurised dense products without atomization air.  
Ideal for glue, sealant and lubricants.  
Body: nickel-plated sanded brass  
Barrel: 150 mm, diam. int. 4 mm with product blocking at the tip of the barrel on the screwable nozzle  
Adjustments: product  
Weight: 345 g

Working pressure: MAX 3 bar  
Air consumption: 30 - 60 l/min.



Recommended use:



## MM

Ref. 62007

Tank: nylon 4,75 l  
Body: varnished aluminium  
Cap: nickel-plated brass  
Needle-springs: brass  
Adjustments: product  
Weight: 1,36 Kg

Working pressure: 3,4 - 4,8 bar  
Air consumption: 120 l/min.  
Nozzle Ø: 4,5 - 6,0 - 8,0



Recommended use:





# LOW PRESSURE series

Spray guns with low air consumption which allows the use with membrane type or low-power compressors. Strong and reliable, ideal for paint applications, touch ups and all D.I.Y. jobs.



## BP

Ref. 35500

Bayonet tank, pressurised with screw closure: 1000 cc aluminium  
Body: nickel-plated brass  
Cap: brass  
Needle-nozzle: brass  
Weight: 900 g

Working pressure: MAX 3,0 bar  
Air consumption: 60 l/min.  
Nozzle Ø: 1,4



Recommended use:



## FLASH

Bayonet tank, pressurised with screw closure: 1000 cc aluminium  
Body: zamak (available in black cathaforesis or nickel-plated)  
Cap: brass  
Needle-nozzle: brass  
Weight: 900 g

**FLASH/M** with continuous air flow for diaphragm compressors Ref. 35501

**FLASH** with adjustable air flow for standard and diaphragm compressors Ref. 35505

Working pressure: MAX 3,0 bar  
Air consumption: 60 l/min.  
Nozzle Ø: 1,4



Recommended use:



# main spray gun **SPARE PARTS**

Main Asturomec® original spare parts supplied in practical packaging to maintain parts most subject to wear. Complete range of suction and gravity cups, available in the materials and sizes best suited for every type of use.

## **ADC KIT**

Needle, nozzle and cap, essential spare parts for correct spray gun operations.



## **CUPS**

Complete range of POM C, aluminium, pressurised, upper and lower cups.



The ADC KIT contains needle-nozzle-air cap for the following models:

**9011 HVLP**

REF.	Ø
43013	1,3
43015	1,5
43017	1,7
43019	1,9
43022	2,2
43025	2,5

**9010 HVLP  
9010/SP HVLP**

REF.	Ø
*43110	1,0
*43113	1,3
43115	1,5
43117	1,7
43119	1,9
43122	2,2
43125	2,5

\* only for "SP" model

**9011 HTE**

REF.	Ø
43213	1,3
*43215	1,5
43217	1,7
*43219	1,9
*43222	2,2
*43225	2,5

\* for "HD" model too

**9010 HTE  
9010/SP HTE**

REF.	Ø
*43310	1,0
43313	1,3
43315	1,5
43317	1,7
43319	1,9
43322	2,2
43325	2,5

\* only for "SP" model

**9000****9010 ECOMIX  
9010/SP ECOMIX**

REF.	Ø
43422	2,2
43425	2,5
43430	3,0

**9011 GEL COAT**

REF.	Ø
43630	3,0
43640	4,0
43650	5,0

**9010/SP GEL COAT**

REF.	Ø
43730	3,0
43740	4,0
43750	5,0

**9010/SP COLLA**

REF.	Ø
43517	1,7
43519	1,9

**6000****6011 HVLP**

REF.	Ø
43912	1,2
43914	1,4
43917	1,7
43919	1,9
43922	2,2
43925	2,5
43930	3,0

**6010 HVLP  
6010/SP HVLP**

REF.	Ø
43912	1,2
43914	1,4
43917	1,7
43919	1,9
43922	2,2
43925	2,5
43930	3,0

**6011 HTE**

REF.	Ø
44012	1,2
44014	1,4
44017	1,7
44019	1,9
44022	2,2
44025	2,5
44030	3,0

**6010 HTE  
6010/SP HTE**

REF.	Ø
44012	1,2
44014	1,4
44017	1,7
44019	1,9
44022	2,2
44025	2,5
44030	3,0

**OM GREEN  
IM GREEN  
OM - IM****OM GREEN**

REF.	Ø
40114	1,4
40117	1,7
40119	1,9
40122	2,2

**IM GREEN  
IM/SP GREEN**

REF.	Ø
40214	1,4
40217	1,7
40219	1,9
40222	2,2

**OM**

REF.	Ø
40160	1,0
40161	1,2
40162	1,4
40163	1,7
40164	1,9
40166	2,2
40167	2,5
40168	3,0
*40169	3,5
*40170	4,0

**IM - IM/SP**

REF.	Ø
40150	1,2
40151	1,4
40152	1,7
40153	1,9
40155	2,2
40156	2,5
40157	3,0



GRAPHIC  
SERIES

## ES/RV

REF.	Ø
40351	0,5
40352	0,7
40353	1,0
40359	1,2

## ES

REF.	Ø
*40350	0,3
40356	0,5
40357	0,7
40358	1,0

## RE

REF.	Ø
*40410	0,3
40411	0,5
40412	0,7
40413	1,0
40414	1,2

## GRAPHIQUE

REF.	Ø
40361	0,3

UR PLUS  
UR/S PLUSUR/S PLUS  
UR PLUS/SP

REF.	Ø
40320	1,2
40321	1,4
40322	1,7
40323	1,8
40324	1,9
40326	2,2
40327	2,5
40328	3,0

## UR PLUS

REF.	Ø
40310	1,2
40311	1,4
40312	1,7
40313	1,8
40314	1,9
40316	2,2
40317	2,5
40318	3,0

LOW  
PRESSURE  
SERIES

## BP

REF.	Ø
40370	1,4

FLASH  
FLASH/M

REF.	Ø
40375	1,4
40376	1,4

SPECIAL  
SERIES

## G1 - G1/SP

REF.	Ø
40380	1,9
40381	2,2
40382	2,5

G1/T  
G1/T SP

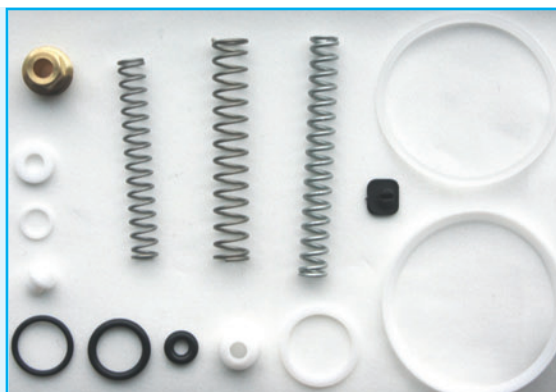
REF.	Ø
40385	1,9
40386	2,2
40387	2,5

## RD

REF.	Ø
40395	1,7

Set of gaskets includes: springs, rod, air valve for spray guns

Model	REF.
9011 all models	40775
9010 all models	40770
6000 all models	40776
OM - IM	40730
IM - SP	40732
UR/S PLUS UR PLUS	40733



Model	REF.
ES/RV	40715
ES	40716
GRAPHIQUE	40720
RD	40730
BP	40750
FLASH	40751
G1-G1/T	40780
G1 SP - G1/T SP	40781

## GRAVITY CUPS: Nylon and Aluminium (M 12x1)

### NYL. 680 cc

Ref. 52010

680 cc nylon tank - weight: 215 g

Valid for models:

**9011 (all models)****6011 (all models)****OM****RD****UR/S PLUS**

### NYL. 250 cc

Ref. 52012

250 cc nylon tank - weight: 115 g

Valid for models:

**OM GREEN****OM****UR/S PLUS**

### ALU. 1000 cc

Ref. 52005

1000 cc aluminium tank - weight: 170 g

Valid for models:

**9011 (all models)****6011 (all models)****OM GREEN****OM****PRIMA****UR/S PLUS**

### ALU. 500 cc

Ref. 52007

500 cc aluminium tank - weight: 116 g

Valid for models:

**9011 (all models)****6011 (all models)****OM GREEN****OM****UR/S PLUS**

### Tanks mod. Graphique

20 cc glass suction cup - weight 30 g

Ref. 52039

4 cc anodized aluminium gravity cup - weight 10 g

Ref. 51040



## GRAVITY CUPS: Nylon and Aluminium (M 8x0,75)

### NYL. 250 cc

Ref. 52030

250 cc nylon tank - weight: 115 g

Valid for models:

**ES**  
**ES/RV**  
**RE**



### NYL. 75 cc

Ref. 52032

75 cc nylon tank - weight: 54 g

Valid for models:

**ES**  
**ES/RV**  
**RE**



### ALU. 125 cc

Ref. 52036

125 cc aluminium tank - weight: 170 g

Valid for models:

**ES**  
**ES/RV**  
**RE**



## PRESSURIZED GRAVITY CUPS for high-density products

### Pressurized gravity cup-9011 HD

680 cc nylon tank, complete with pressure regulator for spray gun inlet air, with pressure gauge.  
 For high density products such as latex, polyurethane, gel coat, tixotropics, etc.  
 Weight: 560 g

Ref. 52054

1000 cc aluminium tank, complete with pressure regulator for spray gun inlet air, with pressure gauge.  
 For high density products such as latex, polyurethane, gel coat, tixotropics, etc.  
 Weight: 560 g

Ref. 52053



## CAMLOCK cups for suction spray guns

### ALU. 1000 cc

1000 cc anodized aluminium suction cup with cover	Ref. 51004
Weight: 370 g	
1000 cc anodized aluminium suction cup only	Ref. 20100101083
Weight: 171 g	

Valid for models:

**9010 HVLP**  
**6010 HVLP**



### ALU. 1000 cc

1000 cc polished aluminium suction cup with cover	Ref. 51002
Weight: 370 g	
1000 cc polished aluminium suction cup only	Ref. 20100102083
Weight: 171 g	
Set of 5 pieces of gaskets for camlock cup	Ref. 90119

Valid for models:

**9010 HTE**  
**6010 HTE**  
**IM**  
**UR PLUS**



## BAYONET cups for suction spray guns

### ALU. 1000 cc

1000 cc anodized aluminium suction cup with cover	Ref. 51009
Weight: 171 g	
1000 cc anodized aluminium suction cup only	Ref. 20100568183
Weight: 116 g	

Valid for models:

**9010 HVLP**  
**6010 HVLP**



### ALU. 1000 cc

1000 cc polished aluminium suction cup with cover	Ref. 51020
Weight: 300 g	
1000 cc polished aluminium suction cup only	Ref. 20100568083
Weight: 116 g	
Set of 5 pieces of gaskets for camlock cup	Ref. 90120

Valid for models:

**9010 HTE**  
**6010 HTE**  
**IM**  
**PRIMA**  
**UR PLUS**





## Stainless steel BAYONET cups

### 1000 cc stainless steel

1000 cc stainless steel suction cup with cover

Weight: 650 g

Ref. 51030

1000 cc stainless steel suction cup only

Weight: 171 g

Ref. 1011094

Set of 5 pieces of gaskets for stainless steel bayonet cup

Ref. 90132

Valid for models:

**9010 ECOMIX**

**G1**

**G1/T**



## SCREW CUPS

### ALU. 1000 cc - FLASH

Ref. 20101044084

1000 cc stainless steel suction cup only

Weight: 196 g



### ALU. 1000 cc - BP

1000 cc stainless steel suction cup only

Weight: 124 g

Ref. 20101044083

Set of 5 pieces of gaskets for screw cup

Ref. 90126



# painting ACCESSORIES

Professional accessories designed to facility bodyworks, guaranteeing maximum efficiency and practicality, demonstrating that even details are important in quality works. A complete ranges, from regulators to masks, clothing to Personal Protection Equipment, specific paint booth hoses and paint filters. All this designed and manufactured by Walmec exclusively for professionals.

## PAPER SIEVE

Practical, efficient, disposable sieve for correct paint filtering.

## MASK

Complete with helmet, visor and internal air regulator; required for workman's safety in the paint booth.

## GOGGLES

Light weight and ergonomic, they guarantee maximum safety during work.

## MASKS

Active carbon or dust-proof, they offer suitable respiratory tract protection.

## SKELETON

Spray gun bench stand with upper tank.



## OVERALLS

Made of Nylon with an anti-static finish, it is the solution required to work in the paint booth. The anti-static finish makes it paint fume repellent.

## GLOVES

Made of latex, paint and solvent resistant, they let the operator work in fully clean conditions.

## Regulator

Ref. 90105

Air flow regulator with glass pressure gauge and metallic case to be applied to the spray gun air inlet  
Pressure gauge: scale 0 - 10 bar  
Air inlet: 1/4" U compatible with various standard 1/4"

Package: 1 pcs  
Weight: 150 g



## Regulator

Ref. 90106

Air flow regulator to be applied to the spray gun air inlet  
Air inlet: 1/4" U compatible with various standard 1/4"

Package: 1 pcs  
Weight: 75 g



## Manometro

Ref. 61306

Spare manometer for air flow regulator  
Connection: M 1/8"  
Diameter: 40 mm

Working pressure: 0 - 10 bar  
Package: 1 pcs  
Weight: 70 g



## HELMET mask

Ref. 50400

Approved protective mask consisting of:  
- visored helmet with internal ventilation,  
- pressure drop safety buzzer,  
- polyurethane hose for spray gun connections,  
- filtering kit with carbon filters,  
- belt,  
- 2 spare adhesive visor cover,  
- CE0194 approved - EN1459N:2005 class A standard compliant

Package: 1 pcs  
Weight: 1,2 Kg



## SAFETY PLUS mask

Ref. 50410

Protective mask with 2 active carbon filters  
- Meet EEC standards, 89/686/EEC directive  
Package: 1 pcs  
Weight: 320 g

Spare filter for Ref. 50410 - weight 100 g

Ref. 50411



## SAFETY mask

Ref. 50416

Protective mask with 1 active carbon filter  
- Meet EEC standards, 89/686/EEC directive  
Package: 1 pcs  
Weight: 280 g

Spare filter for Ref. 50416 - weight 100 g

Ref. 50417



## Paint mask

Ref. 50418

FFP2S active carbon filter face mask, suited for painting.

Package: 10 pcs

Weight: 260 g



## Dust mask

Ref. 50419

FFP1 dust-proof filter face mask.

Package: 50 pcs

Weight: 160 g



## Goggles

Ref. 50420

V-Maxx protective goggle mask with AC lenses + 2 lens covers

Package: 5 pcs

Weight: 375 g



## Gloves

Ref. 50421

Latex, non-sterile ambidextrous paint gloves.

Paint and solvent resistant.

Package: 50 pcs

Weight: 2 Kg

One size fits all



## Supporter

Ref. 60130/A

Magnetic holder for spray guns with gravity cups.

Can also be affixed to non-ferrous surfaces using supplied screws.

Features: painted steel

Package: 1 pcs

Dimensions cm: L 20 x P 14,5 x H 23,2 cm

Weight: 1,5 Kg



## Skeleton

Ref. 60149

Holder for spray guns with gravity cups. Simple, stable and ergonomic, suited for any spray gun.

Features: galvanised steel

Package: 1 pcs

Dimensions cm: L 13 x P 20 x H 29 cm

Weight: 390 g



## Filter

Ref. 90111

Steam trap filter with filler component and steam release valve to be fitted at the inlet of the spray gun.

Package: 1 pcs  
Weight: 100 g



## Filter

100-mesh complete filter for pressure fed spray guns, **F/M 3/8"** version\*

Ref. 60097

100-mesh complete filter for pressure fed spray guns, **F/M 1/4"** version \*

Ref. 60098

100-mesh complete filter for Ref. 60097 \*\*

Ref. 412012

\* Package: 1 pcs  
Weight: 50 g

\*\* Package: 1 pcs  
Weight: 25 g



## Filter

Ref. 90112

2000-mesh stainless steel paint filter to be attached to the suction pipe of spray guns with suction cups.

Package: 10 pcs  
Weight: 50 g



## Filter

Ref. 90113\*\*

Nylon paint filter to be attached to the suction pipe of spray guns with suction cups.

\*\* Specify: 5000 - 7000 - 10000 mesh

Package: 10 pcs  
Weight: 65 g



## Filter

Ref. 90114/A

2000-mesh nylon paint filter to be attached to the spray gun with gravity cups for touch-ups

Package: 10 pcs  
Weight: 40 g



## Sieve

Ref. 90115\*\*

Nylon sieve for paint

\*\*Specify: 2000 - 5000 - 7000 - 10000 - 15000 - 17000 mesh

Package: 10 pcs  
Weight: 300 g





## Paper sieve

Disposable paper paint sieve.

1000 mesh version

Ref. 90146.10

2500 mesh version

Ref. 90146.25

Package: 250 pcs

Weight: 1,473 Kg



## Viscosimeter

Ref. 90116

"FORD 4" viscosimeter cup to test paint density.

Package: 3 pcs

Weight: 270 g



## Manometer protector

from 39 to 43 mm

Ref. 90128

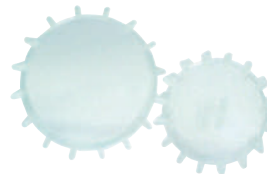
from 63 mm

Ref. 90129

Transparent shockproof and paint-proof pressure gauge guard, washable with solvent

Package: 10 pcs

Weight: 10 g



## Captest

Ref. 90124\*\*

Captest for 9010-9011 HVLP spray guns. Cap with manometer attached so as to verify the effective air pressure at the air cap outlet.

Manometer: scale 0 - 2,5 bar

Weight: 270 g

Nozzle Ø: 1,0 - 1,3 - 1,5 - 1,7 - 1,9 - 2,2 - 2,5

Weight: 3 pcs



# PRESSURIZED CONTAINERS and LOW PRESSURE PUMP

Ideal for the use of large amounts of product, suggested for wood industry, carpentry, industrial painting, for the application of vinyl and neoprene glues, tar, abrasive pastes and liquids.

Considering the dimensions the product can be poured directly into the tank or placed inside its own container to avoid cleaning. No special maintenance requirements.

A 30 l/min. low pressure pump has been added to the range in order to facilitate work on large surfaces, ideal for any type of use.



## SSP 5

Ref. 90015

Container and fluid passages: stainless steel  
Product pressure regulator  
Coupling for 1 spray gun

Air outlet connection: M 1/4"  
Product outlet connection: M 1/4"  
Tank capacity: 9 l  
Weight: 4 Kg



Recommended use:



## SSP 20

Ref. 90020

Container and fluid passages: stainless steel  
Product pressure regulator  
Coupling for 1 spray gun

Air outlet connection: M 1/4"  
Product outlet connection: M 1/4"  
Tank capacity: 18 l  
Weight: 4,5 Kg



Recommended use:



## SSP 10

Ref. 90018

Internal removable tank: aluminium  
Safety valve and product pressure regulator  
Coupling for 1 spray gun  
Product pipe rapid washing system  
Cover: aluminium, surface treated with black cataphoresis, closure with 4 tie-rods  
Container: steel, treated with black cataphoresis  
Fittings and internal components: stainless steel

Air outlet connection: M 1/4"  
Product outlet connection: M 1/4"  
Tank capacity: 5,5 l  
Weight: 13,5 Kg



Recommended use:



## SSP 10PL

Ref. 90018PL

Safety valve and product pressure regulator  
Coupling for 1 spray gun  
Material outlet at bottom of tank: for dense product  
Cover: aluminium, surface treated with black cataphoresis, closure with 4 tie-rods  
Container: steel, treated with black cataphoresis  
Fittings and internal components: stainless steel

Air outlet connection: M 1/4"  
Product outlet connection: M 1/4"  
Tank capacity: 10 l  
Weight: 14,5 Kg



Recommended use:



## SSP 24

Ref. 90019

\*Ref. 90019/CE

Internal removable tank: polyethylene  
 Container: black cataphoresis, with reinforced top  
 Safety valve and product pressure regulator  
 Coupling for 2 spray guns  
 Product pipe washing system  
 Product stirrer: manual  
 Cover: steel, surface treated with black cataphoresis, closure with 5 tie-rods supplied with seal toroidal gasket, complete with tap in zinc steel  
 Fittings and internal components: stainless steel

Air outlet connection: M 1/4" - Product outlet connection: M 1/4"

Tank capacity: 5,5 l

Weight: 13,5 Kg

\*Optional: Meet EEC standards



Recommended use:



## SSP 24 PL

Ref. 90019PL

\*Ref. 90019/PL/CE

Container: black cataphoresis, with reinforced top  
 Safety valve and product pressure regulator  
 Coupling for 2 spray guns  
 Product stirrer: manual  
 Material outlet at bottom of tank: for dense product  
 Cover: steel, surface treated with black cataphoresis, closure with 5 tie-rods supplied with seal toroidal gasket, complete with tap in zinc steel for adding product  
 Fittings and internal components: stainless steel

Air outlet connection: M 1/4" - Product outlet connection: M 1/4"

Tank capacity: 24 l

Weight: 33 Kg

\*Optional: Meet EEC standards



Recommended use:



## SSP 24 AP

Ref. 90019AP

\*Ref. 90019/AP/CE

Internal removable tank: polyethylene  
 Container: black cataphoresis, with reinforced top  
 Safety valve and product pressure regulator  
 Coupling for 2 spray guns  
 Product pipe rapid washing system  
 Product stirrer: pneumatic  
 Cover: steel, surface treated with black cataphoresis, closure with 5 tie-rods supplied with seal toroidal gasket, complete with tap in zinc steel for adding product.

Air outlet connection: M 1/4" - Product outlet connection: M 1/4"

Tank capacity: 16 l

Weight: 38,5 Kg

\*Optional: Meet EEC standards



Recommended use:



## WM 30

Ref. 90050

Low pressure pump equipped with DOUBLE DIAPHRAGM PRESSURE REGULATOR.  
 For all kinds of paint, primers, colour and finishing

Working pressure: MAX 6 bar

Air consumption: MAX 30 l/min

Weight: 19 Kg



Recommended use:



## Double hose

Black rubber hose for compressed air 6x14  
Transparent Rilsan hose for product 8x10

7 m version - weight 1,6 Kg	Ref. 90032
10 m version - weight 2,3 Kg	Ref. 90035
14 m version - weight 3,2 Kg	Ref. 90034

Connection: F1/4" on product hose-bayonet on air hose  
Package: 1 pcs



## Double hose

Flexible bicolor hose in SBR/EPDM rubber  
Black rubber hose for compressed air 6x13  
Transparent Rilsan hose for product 6x13

10 m version	Ref. 90036
7 m version	Ref. 90037

Air/product connection: F1/4"  
Weight: 3,3 - 2,4 Kg  
Package: 1 pcs



## Aluminium tank

Ref. A008051

Internal aluminium tank for SSP 24 and SSP 24 AP

Package: 1 pcs  
Weight: 1,3 Kg



## Wheels

Ref. 90025

4 clamp kit wheels for SSP10 and SSP24

Package: 4 pcs  
Weight: 1,95 Kg





# BLOW GUNS

Designed and constructed for professional use, they are divided into 4 macro groups: PROFI series, PA/4N series, SOFT series and the new, captivating and modern PA/6 series.

Always functional and reliable, they now also meet the more demanding customer's needs with versions enhanced by the modern and innovative design.

The new PA/6 is a demonstration, combining functional quality with a unique design made possible by the grip's soft-touch rubber overprinting.

The wide range of available nozzles make Asturomec® blow guns flexible and suited for more specific use.

The entire series is equipped with progressive distribution valve.

## PROGRESSIVE VALVE

The distinguishing element in our blow guns, they accurately and reliably dose the amount of air to be used.



## PA/6

Nickel-plated body with soft-touch rubber overprinting for a sure and comfortable grip.

One of a kind, the PA/6 represents Asturomec's future.



## PA/4NT Ref. 50071



## PA/4NT

Innovative and captivating materials like the transparent nylon that identifies this full "vision" gun.



## PA/6 Ref. 50065



## PROFI

9 models available to meet the professional's specific needs. A gun that represents our brand and reliability.



**PROFI**

Ref. 50000

Professional blow gun.  
 Finely adjustable progressive flow delivery valve with spring in stainless steel  
 Air inlet: M 1/4" with swivel connection FF  
 Body: hostaform C®  
 Barrel: 150 mm curved

Working pressure: 1,0 - 6,0 bar  
 Package: 6 pcs  
 Weight: 845 g



Recommended use:

**PROFI**

Professional blow gun.  
 Finely adjustable progressive flow delivery valve with spring in stainless steel  
 Air inlet: M 1/4" with swivel connection FF  
 Body: hostaform C®  
 Barrel: 300 mm extra-long



Recommended use:

**PROFI**

Ref. 50003

Professional blow gun with non-scratching rubber tip.  
 Finely adjustable progressive flow delivery valve with spring in stainless steel  
 Air inlet: M 1/4" with swivel connection FF  
 Body: hostaform C®  
 Barrel: 150 mm extra-long

Working pressure: 1,0 - 6,0 bar  
 Package: 6 pcs  
 Weight: 870 g



Recommended use:

**PROFI**

Ref. 50004

Professional blow gun.  
 Finely adjustable progressive flow delivery valve with spring in stainless steel  
 Air inlet: M 1/4" with swivel connection FF  
 Body: hostaform C®  
 Barrel: 1 m with flexible copper barrel

Working pressure: 1,0 - 6,0 bar  
 Package: 1 pcs  
 Weight: 270 g



Recommended use:



**PROFI**

Ref. 50005

Professional liquid atomising gun for washing, degreasing and lubricating with naphtha and diesel.

Finely adjustable progressive flow delivery valve with spring in stainless steel

Air inlet: M 1/4" with swivel connection FF

Body: hostaform C®

Hose: da 3 m

Working pressure: 1,0 - 6,0 bar

Package: 1 pcs

Weight: 295 g



Recommended use:

**PROFI**

Ref. 50006

Professional blow gun with silenced nozzle in compliance with CE standards.

Noise level inferior to 80 DbA

Finely adjustable progressive flow delivery valve with spring in stainless steel

Air inlet: M 1/4" with swivel connection FF

Body: hostaform C®

Barrel: 150 mm curved

Working pressure: 1,0 - 6,0 bar

Package: 6 pcs

Weight: 920 g



Recommended use:

**PROFI**

Ref. 50007

Professional blow gun with Venturi nozzle for increasing the outlet air volume.

Finely adjustable progressive flow delivery valve with spring in stainless steel

Air inlet: M 1/4" with swivel connection FF

Body: hostaform C®

Barrel: 150 mm curved

Working pressure: 1,0 - 6,0 bar

Package: 1 pcs

Weight: 155 g



Recommended use:

**PROFI**

Ref. 50008

Professional blow gun with anti-splintering safety nozzle.

Finely adjustable progressive flow delivery valve with spring in stainless steel

Air inlet: M 1/4" with swivel connection FF

Body: hostaform C®

Barrel: 150 mm curved

Working pressure: 1,0 - 6,0 bar

Package: 1 pcs

Weight: 160 g



Recommended use:



**PROFI**

Ref. 50009

Professional blow gun with safety nozzle in compliance with OSHA (USA) standards.

Finely adjustable progressive flow delivery valve with spring in stainless steel  
Air inlet: M 1/4" with swivel connection FF

Body: hostaform C®

Barrel: 150 mm curved

Working pressure: 1,0 - 6,0 bar

Package: 1 pcs

Weight: 150 g



Recommended use:

**PA/6**

Ref. 50065

Blow gun with progressive flow delivery valve.

Body: polished and nickel-plated metal with soft-touch rubber overprinting

Nozzle: short

Working pressure: 1,0 - 6,0 bar

Package: 10 pcs

Weight: 2,38 Kg



Recommended use:

**PA/6L - PA/6LL**

Blow gun with progressive flow delivery valve.

Body: polished and nickel-plated metal with soft-touch rubber overprinting

Barrel: 150 mm straight - **PA/6L** version (\*)

Ref. 50066

Barrel: 300 mm straight - **PA/6LL** version (\*\*)

Ref. 50067

Working pressure: 1,0 - 6,0 bar

Package: 1 pcs

(\*) weight: 254 g - (\*\*) weight: 274 g



Recommended use:

**PA/6CV**

Ref. 50068

Blow gun with progressive flow delivery valve.

Body: polished and nickel-plated metal with soft-touch rubber overprinting

Nozzle: Venturi, for increasing the outlet air volume

Working pressure: 1,0 - 6,0 bar

Package: 1 pcs

Weight: 271 g



Recommended use:



**PA/4N**

Ref. 50047

Blow gun with progressive flow delivery valve.  
Body: nylon  
Nozzle: short

Working pressure: 1,0 - 6,0 bar  
Package: 10 pcs  
Weight: 1,9 Kg



Recommended use:

**PA/4NL - PA/4NLL**

Blow gun with progressive flow delivery valve  
Body: nylon

Barrel: 150 mm straight - **PA/4NL** version (\*)

Ref. 50048

Barrel: 300 mm straight - **PA/4NLL** version (\*\*)

Ref. 50049

Working pressure: 1,0 - 6,0 bar  
Package: 1 pcs  
(\*) Weight: 200 g - (\*\*) Weight: 225 g



Recommended use:

**PA/4NP**

Ref. 50050

Blow gun with specific needle for inflating balls  
Finely adjustable progressive flow delivery valve with spring in stainless steel  
Body: nylon

Working pressure: 1,0 - 6,0 bar  
Package: 10 pcs  
Weight: 1,9 Kg



Recommended use:

**PA/4NT**

Ref. 50071

Blow gun with progressive flow delivery valve.  
Body: clear nylon  
Nozzle: short

Working pressure: 1,0 - 6,0 bar  
Package: 10 pcs  
Weight: 1,9 Kg



Recommended use:



## PA/4NTL - PA/4NTLL

Blow gun with progressive flow delivery valve.  
Body: clear nylon

Barrel: 150 mm straight - **PA/4NTL** version (\*) Ref. 50072

Barrel: 300 mm straight - **PA/4NTLL** version (\*\*) Ref. 50073

Working pressure: 1,0 - 6,0 bar

Package: 1 pcs

(\*) Weight: 200 g - (\*\*) Weight: 225 g



Recommended use:



## PA/4N - PA/4NT: SICURA

Blow gun equipped with a progressive distribution valve with splinter-proof, scratchproof nozzle, EC standard muffled, OSHA safe (USA)  
Body: in nylon/ clear nylon

nylon version **PA/4N SICURA** (\*) Ref. 50046

clear nylon version **PA/4NT SICURA** (\*\*) Ref. 50070

Working pressure: 1,0 - 6,0 bar

Package: 5 pcs

(\*) Weight: 1,8 Kg - (\*\*) Weight: 2,0 Kg



Recommended use:



## SOFT

Ref. 50020

Extremely small blow gun (105 x 25 mm), equipped with progressive distribution valve.

Body: rubber

Fitting: F1/4"

Working pressure: 1,0 - 6,0 bar

Package: 1 pcs

Weight: 60 g



Recommended use:



## SOFT

Ref. 50026

Extremely small blow gun (105 x 25 mm), equipped with progressive distribution valve.

Body: rubber

Fitting: M1/4" with 4 m polyurethane spiral air hose

Working pressure: 1,0 - 6,0 bar

Package: 1 pcs

Weight: 180 g



Recommended use:





**SPECIAL NOZZLE**

Ref. 90150

OSHA safety nozzle, spare part for PROFI ref. 50009.

Compatible with:

PROFI	ref. 50000
PROFI	ref. 50001
PA/6L	ref. 50066
PA/6LL	ref. 50067
PA/4NL	ref. 50048
PA/4NLL	ref. 50049
PA/4NTL	ref. 50072
PA/4NTLL	ref. 50073

Package: 10 pcs

Weight: 300 g



Recommended use:

**SPECIAL NOZZLE**

Ref. 90151

Anti-splintering nozzle, spare part for PROFI ref. 50008.

Compatible with:

PROFI	ref. 50000
PROFI	ref. 50001
PA/6L	ref. 50066
PA/6LL	ref. 50067
PA/4NL	ref. 50048
PA/4NLL	ref. 50049
PA/4NTL	ref. 50072
PA/4NTLL	ref. 50073



Recommended use:

**SPECIAL NOZZLE**

Ref. 90152

VENTURI nozzle, spare part for PROFI ref. 50007.

Compatible with:

PROFI	ref. 50000
PROFI	ref. 50001
PA/6L	ref. 50066
PA/6LL	ref. 50067
PA/4NL	ref. 50048
PA/4NLL	ref. 50049
PA/4NTL	ref. 50072
PA/4NTLL	ref. 50073

Package: 5 pcs

Weight: 225 g



Recommended use:

**SPECIAL NOZZLE**

Ref. 90153

Silenced nozzle in compliance with EC standards,  
spare part for PROFI ref. 50006.

Compatible with:

PROFI	ref. 50000
PROFI	ref. 50001
PA/6L	ref. 50066
PA/6LL	ref. 50067
PA/4NL	ref. 50048
PA/4NLL	ref. 50049
PA/4NTL	ref. 50072
PA/4NTLL	ref. 50073

Package: 5 pcs

Weight: 375 g



Recommended use:



**SPECIAL NOZZLE**

Ref. 90154

Atomiser nozzle and 3 m hose, spare part for PROFI ref. 50005.

Compatible with:

PROFI	ref. 50000
PROFI	ref. 50001
PA/6L	ref. 50066
PA/6LL	ref. 50067
PA/4NL	ref. 50048
PA/4NLL	ref. 50049
PA/4NTL	ref. 50072
PA/4NTLL	ref. 50073

Package: 1 pcs

Weight: 170 g



Recommended use:

**SPECIAL NOZZLE**

Ref. 90155

Non-scratch tip, spare part for PROFI ref. 50003.

Compatible with:

PROFI	ref. 50000
PROFI	ref. 50001
PA/6L	ref. 50066
PA/6LL	ref. 50067
PA/4NL	ref. 50048
PA/4NLL	ref. 50049
PA/4NTL	ref. 50072
PA/4NTLL	ref. 50073

Package: 5 pcs

Weight: 125 g



Recommended use:

**SPECIAL NOZZLE**

Ref. 901025

1 meter flexible copper barrel, spare part for PROFI ref. 50004.

Package: 1 pcs

Weight: 180 g



Recommended use:



# INFLATING GUNS

Accurate and reliable, they have always been a measurement instrument selected and appreciated by the most demanding professionals and DIY lovers.

From the legendary PG/S to the brand new PG/PRO, the result of years of technical, functional and aesthetic research associated with decades of experience in this sector, the Asturomec inflation gun range is the most complete and professional range on the market.

Precision instruments with top quality pressure gauges, equipped with FAIL SAFE GAUGE SAFETY VALVE that prevents gauge needle oscillations during use, cutting it off from the air line during inflation.

Available in the CEE/OM version, meeting EEC D96 18.08.02 nr. 71/316 directive standards for pressure gauges and gun (check First).



**PG PRO CEE/OM**

Ref. 50180/O

Professional inflating gun **EEC approved.**  
 Pressure-manometer protecting safety valve  
 Body: nickel-plated brass, Marfran C shockproof and nonslip grip  
 Lever: single pressure load made of stainless steel  
 Two-way release button: fast or regulation  
 PVS pressure reading system  
 Manometer: diam. 80 mm EEC approved-scale 0-10 bar  
 Length of tube: 1 m

Working pressure: 1,0 - 6,0 bar  
 Package: 1 pcs  
 Weight: 910 g



Recommended use:

**PG/G PRO CEE/OM**

Ref. 50181/O

Professional inflating gun **EEC approved, for twin or spoked wheels.**  
 Pressure-manometer protecting safety valve  
 Brass inflating head, 30 cm long  
 Body: nickel-plated brass, Marfran C shockproof and nonslip grip  
 Lever: single pressure load made of stainless steel  
 Two-way release button: fast or regulation  
 PVS pressure reading system  
 Manometer: diam. 80 mm EEC approved-scale 0-10 bar  
 Length of tube: 1 m

Working pressure: 1,0 - 6,0 bar  
 Package: 1 pcs  
 Weight: 1,02 Kg



Recommended use:

**PG PRO**

Ref. 50182

Professional inflating gun.  
 Pressure-manometer protecting safety valve  
 Body: nickel-plated brass, Marfran C shockproof and nonslip grip  
 Lever: single pressure load made of stainless steel  
 Two-way release button: fast or regulation  
 PVS pressure reading system  
 Manometer: diam. 80 mm EEC approved-scale 0-10 bar  
 Length of tube: 1 m

Working pressure: 1,0 - 6,0 bar  
 Package: 1 pcs  
 Weight: 800 g



Recommended use:

**PG/G PRO**

Ref. 50183

Professional inflating gun, for twin or spoked wheels.  
 Pressure-manometer protecting safety valve  
 Brass inflating head, 30 cm long  
 Body: nickel-plated brass, Marfran C shockproof and nonslip grip  
 Lever: single pressure load made of stainless steel  
 Two-way release button: fast or regulation  
 PVS pressure reading system  
 Manometer: diam. 80 mm EEC approved-scale 0-10 bar  
 Length of tube: 1 m

Working pressure: 1,0 - 6,0 bar  
 Package: 1 pcs  
 Weight: 930 g



Recommended use:



**PG/S CEE/OM**

Ref. 50108/O

Inflating gun **EEC approved.**

Pressure-manometer protecting safety valve

Body: nylon

Lever: single operation with double acting pressing filling and release lever

Manometer: diam 63 mm EEC approved-scale 0-10 bar

Length of tube: 80 cm

Working pressure: 1,0 - 6,0 bar

Package: 1 pcs

Weight: 460 g



Recommended use:

**PG/SG CEE/OM**

Ref. 50109/O

Inflating gun **EEC approved, for twin or spoked wheels**

Pressure-manometer protecting safety valve

Brass inflating head, 30 cm long

Body: nylon

Lever: single operation with double acting pressure filling and release lever

Manometer: diam 63 mm EEC approved-scale 0-10 bar

Length of tube: 80 cm

Working pressure: 1,0 - 6,0 bar

Package: 1 pcs

Weight: 590 g



Recommended use:

**PG/S**

Ref. 50106

Inflating gun.

Pressure-manometer protecting safety valve

Body: nylon

Lever: single operation with double acting pressure filling and release lever

Manometer: diam. 63 mm double scale bar/psi

Length of tube: 80 cm

Working pressure: 1,0 - 6,0 bar

Package: 1 pcs

Weight: 440 g



Recommended use:

**PG/SG**

Ref. 50107

Inflating gun, for twin or spoked wheels.

Pressure-manometer protecting safety valve

Brass inflating head, 30 cm long

Body: nylon

Lever: single operation with double acting pressure filling and release lever

Manometer: diam. 63 mm double scale bar/psi

Length of tube: 80 cm

Working pressure: 1,0 - 6,0 bar

Package: 1 pcs

Weight: 570 g



Recommended use:



## CP

Pressure manometer for checking pressure - double scale bar/psi Ref. 50120

Pressure manometer for checking pressure - single scale bar Ref. 50120/BAR

Manometer: diameter 63 mm  
Package: 1 pcs  
Weight: 260 g



Recommended use:



## INFLATING HEAD

Polyamide + fibreglass version - diam. 6 mm - weight 560 g Ref. 50121

Polyamide + fibreglass version - diam. 8 mm - weight 560 g Ref. 50134

Turned brass version - diam. 6 mm - weight 660 g Ref. 50127

Turned brass version - diam. 8 mm - weight 660 g Ref. 50128

Inflating head with PRESTA valve, PRESTA HIGH, PRESTA HIGH PLUS - use: for racing bicycles - weight 685 g

Package: 25 pcs



Recommended use:



## INFLATING HEAD

Special GEM brass inflation head for paired or spoke wheels, compatible with hose diam. 6/8 mm

300 mm long version - complete with grip (\*) Ref. 50123

200 mm long version (\*\*) Ref. 50122

Package: 3 pcs  
(\*) Weight: 460 g - (\*\*) Weight: 290 g



Recommended use:



## INFLATING KIT

Ref. 50125

Inflation kit made up of 3 pcs.  
Material: brass/steel  
Use: bicycles, rafts, balls

Package: 1 pcs  
Weight: 40 g



Recommended use:





# WASHING GUNS

Guns designed specifically for washing, lubrication, degreasing, spraying, disinfecting and decontaminating in multiple sectors: from workshops to industry, from construction and beatyards to agriculture, garages, bodyshops and D.I.Y.



**N4/S SUPER**

Ref. 50171

Professional cleaning gun suited for any type of use, the air flow can be locked at a set quantity.

Bayonet suction cup: aluminium 1000 cc

Body: aluminium

Adjustable liquid atomising nozzle: nickel-plated brass

Barrel: nickel-plated brass - 300 mm long

Filler opening: diam 8,5 cm

Working pressure: 2,0 - 8,0 bar

Package: 1 pcs

Weight: 1,08 Kg



Recommended use:

**N4/S**

Ref. 50172

Professional washing gun suitable for every use.

Bayonet suction cup: aluminium 1000 cc

Body: aluminium

Adjustable liquid atomising nozzle: nickel-plated brass

Barrel: nickel-plated brass - 200 mm long

Filler opening: diam 8,5 cm

Working pressure: 2,0 - 8,0 bar

Package: 1 pcs

Weight: 1 Kg



Recommended use:

**N4**

Ref. 50173

Professional washing gun suitable for every use.

Bayonet tank with screw closure: 1000 cc aluminium

Body: aluminium

Adjustable liquid atomising nozzle: nickel-plated brass

Barrel: nickel-plated brass - 200 mm long

Filler opening: diam 8,5 cm

Working pressure: 2,0 - 8,0 bar

Package: 2 pcs

Weight: 1,51 Kg



Recommended use:

**LA**

Ref. 50165

Gun for mixing liquid with compressed air.

Body: nickel-plated brass

Water fitting: push-on for 12 mm internal Ø hose to be tightened with a strap

Adjustment of liquid flow using ball valve

Working pressure: 4,0 - 8,0 bar

Package: 1 pcs

Weight: 950 g



Recommended use:

**HYDROJET**

Ref. 50160

Liquid mixing gun with compressed air, equipped with 2 independent valves to dose air and liquid and progressive opening lever for flow regulation.

Body: hostaform C®

Water fitting: push-on for 12 mm internal Ø hose to be tightened with a strap - M1/4"

Working pressure: 1,0 - 6,0 bar

Package: 1 pcs

Weight: 440 g



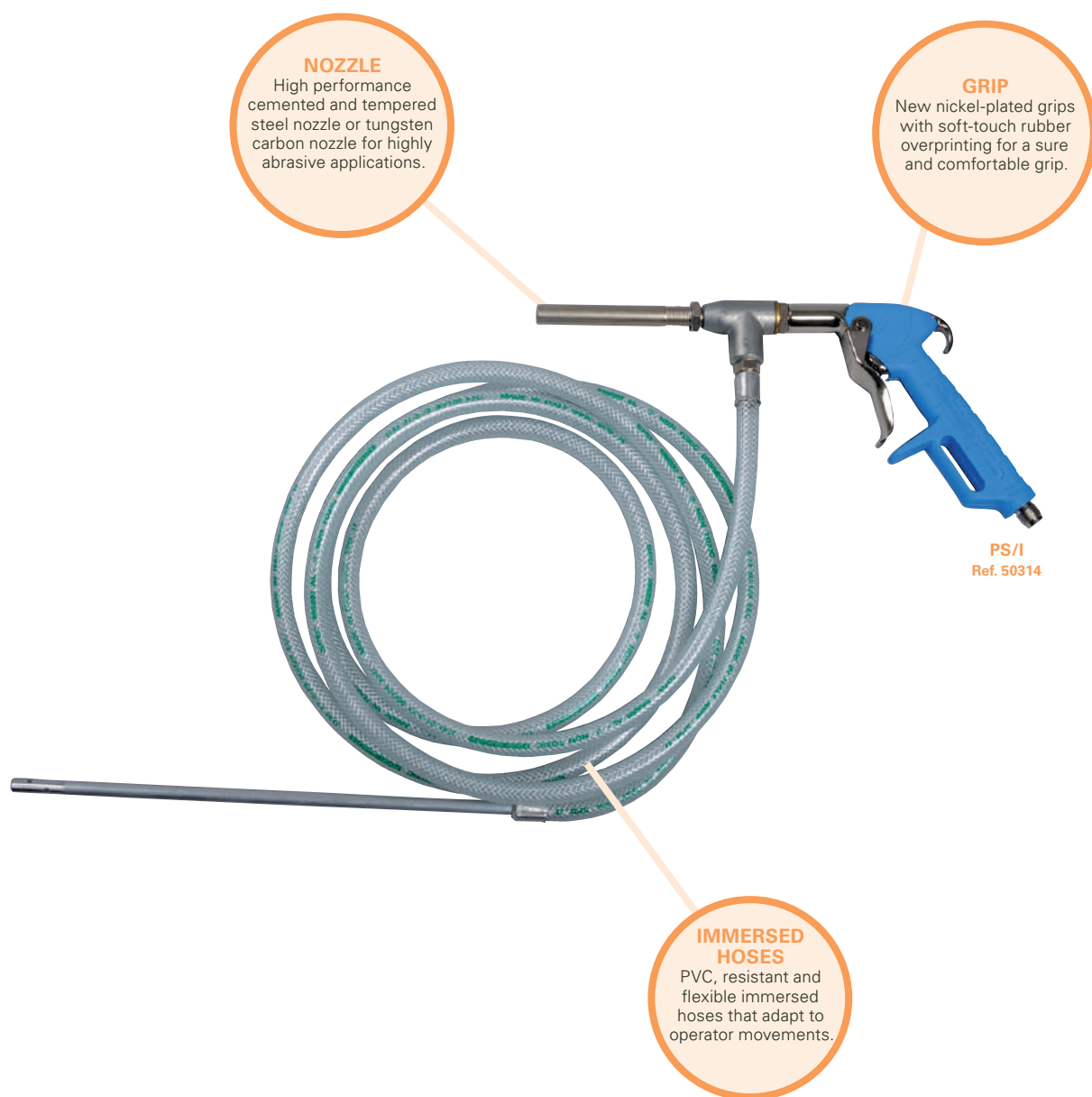
Recommended use:



# SANDBLASTING GUNS

Ideal for all tasks which involve cleaning, scraping, removing rust, paint, mold or stubborn dirt, preparing materials such as wood, steel, aluminium, plastic, etc...

Used in numerous sectors: bodyshops, industry and carpentry.



**PS**

Ref. 50210

Sandblasting gun suitable for work on large surfaces.

Body: nickel-plated sanded brass

Nozzle: cemented casehardened steel Ø 6 mm

Immersed hoses: 2 m hose - diameter 16x22

Working pressure: 5,0 - 8,0 bar

Package: 1 pcs

Weight: 1,75 Kg



Recommended use:

**PS/S**

Ref. 50212

Sandblasting gun suitable for work on large surfaces.

Bayonet suction cup: aluminium 1000 cc

Body: nickel-plated sanded brass

Nozzle: cemented casehardened steel Ø 6 mm

Working pressure: 5,0 - 8,0 bar

Package: 1 pcs

Weight: 1,15 Kg



Recommended use:

**PS/I**

Ref. 50314

Sandblasting gun suitable for work on medium surfaces.

Body: polished and nickel-plated metal with soft-touch rubber overprinting

Nozzle: cemented casehardened steel Ø 6 mm with sand flow rate adjustment

Immersed hoses: 3 m hose - diameter 8x13

Working pressure: 5,0 - 8,0 bar

Package: 1 pcs

Weight: 940 g



Recommended use:

**PS/IS**

Ref. 50316

Sandblasting gun suitable for work on medium surfaces.

Bayonet suction cup: aluminium 1000 cc

Body: polished and nickel-plated metal with soft-touch rubber overprinting

Nozzle: cemented casehardened steel Ø 6 mm with sand flow rate adjustment

Working pressure: 5,0 - 8,0 bar

Package: 1 pcs

Weight: 920 g



Recommended use:



## NOZZLE

6 mm external Ø nozzle for **PS** and **PS/S** (\*)  
cemented and tempered steel version

6 mm external Ø nozzle for **PS** and **PS/S** (\*)  
tungsten carbide version Ref. 20201644294

Ø 6 mm sand output nozzle for **PS/I** and **PS/IS** (\*\*) cemented and tempered steel version Ref. 20201682494

Ø 6 mm sand output nozzle for **PS/I** and **PS/IS** (\*\*) tungsten carbide version Ref. 20201682294

Package: 1 pcs

(\*) Weight: 105 g - (\*\*) Weight: 75 g



Recommended use:



## SUPERMISTRAL

Ref. 50300

Sandblasting gun suitable for work on small surfaces and fitted with automatic sand recovery system, possibility to adjust the vacuum power.

Bayonet suction cup: aluminium 1000 cc

Body: polished and nickel-plated metal with soft-touch rubber overprinting

Featuring: 4 rubber nozzle kit  
1 abrasive sand box of 700 g

Working pressure: 5,0 - 8,0 bar

Package: 1 pcs

Weight: 2,4 Kg



Recommended use:



## MISTRAL

Ref. 50301

Sandblasting gun suitable for work on small surfaces and fitted with automatic sand recovery system.

Bayonet suction cup: aluminium 1000 cc

Body: polished and nickel-plated metal with soft-touch rubber overprinting

Featuring: 1 abrasive sand box of 700 g

Working pressure: 5,0 - 8,0 bar

Package: 1 pcs

Weight: 2,2 Kg



Recommended use:



## NOZZLE KIT

4 rubber nozzle kit for SUPERMISTRAL ref. 50300, shaped to adhere to internal and external angular surfaces of various shapes.

Compatible with: MISTRAL ref. 50301

Package: 1 kit

Weight: 140 g



Recommended use:



## ABRASIVE SAND

25 Kg abrasive sand package - bags - 1 pcs Ref. 50228

700 g abrasive sand package - jar - 5 pcs. Ref. 50226



# GUNS FOR PROTECTIVE and SEALANT COMPOUNDS

Spray guns conceived to apply loose spray sealants, soundproofing products and car underbody protective products in general; prepackaged cartridge or bagged silicon; plaster and putty, also suited for construction or industrial use. Featuring low air consumption that permits its use in various sectors, the range has been redesigned over the years to meet the various market needs with the addition of new versions (TS/N – PSP) and improving others (IM BODY regulator, PB-PB/S body).





## IM BODY

Ref. 50242

Gun for protective soundproofing applications for under body, single components and protective wax, equipped with flow regulator and inlet air flow regulator.

Body: nickel-plated sanded brass

Nozzle: 1 short nozzle with fan-3 different types of atomising nozzles with 90 cm extensions

Tank: in anodised aluminium with internal thread cartridge holder and aluminium suction tube

Working pressure: 5,0 - 8,0 bar

Cup's capacity: 1 l

Package: 1 pcs

Weight: 2,1 Kg



Recommended use:



## PB/S

Ref. 50254

Gun for binder, plaster and silicon applications in bags, equipped with 3 different shaped nickel-plated brass nozzles.

Body: in polypropylene

Tank: in aluminium with automatic pressure release



Recommended use:



## PB

Ref. 50253

Gun for binder, plaster and silicon applications in cartridges, equipped with 3 different shaped nickel-plated brass nozzles.

Body: in polypropylene

Tank: in aluminium with automatic pressure release

Working pressure: 2,0 - 5,0 bar

Package: 1 pcs

Weight: 1,02 Kg



Recommended use:



## AR

Ref. 50243

Gun for applying single component and two component soundproofing protective compounds, premixed including polyurethane-based compounds or loose.

Bayonet suction cup: aluminium 1000 cc

Body: polished and nickel-plated metal with soft-touch rubber overprinting

Working pressure: 2,0 - 5,0 bar

Package: 1 pcs

Weight: 865 g



Recommended use:



## TS

Gun for applying single component soundproofing protective compounds including polyurethane-based compounds and protective waxes in pre-packed 1 l tins.  
Body: polished and nickel-plated metal with soft-touch rubber overprinting  
Featuring: 60 cm long extension tube with special nozzle for spraying in box

Connector:

with European thread (Ref. 50244)

with USA thread (Ref. 50245)

with Southamerican thread (Ref. 50244AM)

Working pressure: 2,0 - 5,0 bar

Package: 1 pcs

Weight: 540 g



Recommended use:



## TS/N

Gun for applying single component soundproofing protective compounds pre-mixed including polyurethane-based compounds or loose.

Body: nylon

Featuring: 60 cm. long extension tube with special nozzle for spraying in box sections

Nozzle: interior in steel-external in hostaform C®

Connector:

with European thread (Ref. 50247)

with USA thread (Ref. 50247 USA)

with Southamerican thread (Ref. 50247 AM)

Working pressure: 2,0 - 5,0 bar

Package: 1 pcs

Weight: 290 g



Recommended use:



## NOZZLE

Ref. 0920901

Hostaform C® connection with adjustable nozzle. Spare part for TS/N

Package: 1 pcs

Weight: 30 g



Recommended use:



## PSP

Ref. 50246

Gun for the applicatoin of polyurethane foam

Body: nickel-plated brass

Adapter: universal type for cylinder

Barrel: 300 mm

Package: 1 pcs

Weight: 368 g



Recommended use:



# GREASE GUNS

Designed for the high pressure greasing of joints, bearings and gears in general, for the motor vehicle repair sector and for internal machine tool mechanisms in the industrial sector.



**GR/1**

Ref. 50270

High pressure grease gun for loose products.  
 Body: sanded aluminium  
 Delivery: 600 bar  
 Featuring: special 4-claw "ZERK" head;  
 "THE CALAMIT" head;  
 high pressure tube included.

Working pressure: 4,0 - 5,0 bar  
 Package: 1 pcs  
 Weight: 3,2 Kg



Recommended use:

**GR/C**

Ref. 50271

High pressure grease gun for products in 600 cc cartridge  
 Body: sanded aluminium  
 Delivery: 600 bar  
 Featuring: special 4-claw "ZERK" head;  
 "THE CALAMIT" head;  
 high pressure tube included.

Working pressure: 4,0 - 5,0 bar  
 Package: 1 pcs  
 Weight: 3,1 Kg



Recommended use:

**GR/E**

Ref. 62006/B

High pressure grease gun for products in cartridge.  
 Body: polished aluminium  
 High pressure hose

Working pressure: 2,0 - 10 bar  
 Package: 1 pcs  
 Weight: 1,5 Kg



Recommended use:

**HEAD**

Ref. 50274

Special 4-claw "ZERK" head.  
 Package: 3 pcs  
 Weight: 110 g

**HEAD**

Ref. 50276

"THE CALAMIT" head.  
 Package: 3 pcs  
 Weight: 120 g

**HOSE**

Ref. 50280

Rubber high pressure hose (max 900 bar) to 40 cm  
 Thread: 10x1 mm  
 Package: 1 pcs  
 Weight: 120 g



# VACUUM CLEANER

Multifunctional product particularly suitable for cleaning inside motor vehicles and therefore ideal for garages, bodyshops and D.I.Y. Compact dimensions, light weight and easy to handle.



EOLO  
Ref. 50150

## EOLO

Ref. 50150

Vacuum gun for car interior cleaning. Includes a large nozzle and vacuum rod.  
Can also be used as a blow gun by removing the hose and bag.

Body: sanded aluminium

Hose length: 50 cm

Zippered dust bag

Working pressure: 4,0 - 8,0 bar

Package: 1 pcs

Weight: 530 g



Recommended use:



## EOLO KIT

Ref. 50155

Accessory Kit for EOLO.

Composing:

- 1 wide tool
- 1 suction lance

Working pressure: 4,0 - 8,0 bar

Package: 1 pcs

Weight: 80 g



Recommended use:



# PNEUMATIC TOOLS

A range that includes the most common pneumatic tools on the market.

Sturdy and reliable, they can be used by DIY and professional with an extremely attractive quality/price ratio. The metallic blue finish sets them apart from “similar” retail articles.

In order to meet the needs of the various customer types, the product has been packaged in two different ways: blister for supermarket and display sales; hard suitcase case for professionals.





## MI

Ref. 62000

Air impact wrench 1/2"  
Body: polished aluminium  
Fitting: 1/4"  
Max torque: 340 Nm  
Speed: 7000 rpm  
Featuring: D connection

Working pressure: 6,2 bar  
Package: 1 pcs  
Weight: 2,3 Kg



Recommended use:



## MK

Ref. 62005

Pneumatic ratchet wrench 1/2"  
Body: polished aluminium  
Fitting: 1/4"  
Square drive: 1/2"  
Speed: 150 rpm  
Featuring: D connection

Working pressure: 6,2 bar  
Package: 1 pcs  
Weight: 1,27 Kg



Recommended use:



## MS

Ref. 62002

Air hammer  
Body: polished aluminium  
Fitting: 1/4"  
Blows/min: 3500 - 5000  
Featuring: D connection; 4 tips + springs set

Working pressure: 6,2 bar  
Package: 1 pcs  
Weight: 1,6 Kg



Recommended use:



## MT

Ref. 62004

Reversible air drill 3/8"  
Body: polished aluminium  
Fitting: 1/4"  
Speed: 1800 rpm  
Featuring: D connection plus wrench

Working pressure: 6,2 bar  
Package: 1 pcs  
Weight: 1,02 Kg



Recommended use:



## SET OF 4 TIPS + SPRINGS

Ref. 62003/B

Steel tips for air hammer

Package: 1 pcs  
Weight: 520 Kg



## SET OF 10 HEXAGONAL SLEEVES 1/2"

Ref. 62001/B

Steel sleeves for air impact wrench  
Sizes: 10 - 11- 13- 14 - 17 - 19 - 21 - 22 - 24 - 27

Package: 1 pcs  
Weight: 1,45 Kg



## BOTTLE OF OIL

Ref. 62008/B

For a correct usage of the pneumatic tools

Package: 1 pcs  
Weight: 132 g



# COUPLINGS and PLUGS

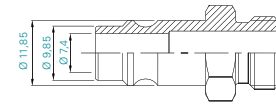
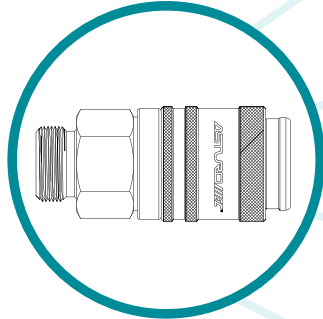
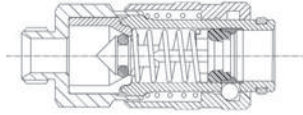
## COMPATIBLE PLUGS

## STANDARD

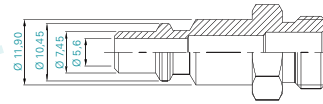
### X300 U

#### X300 U universal automatic coupling

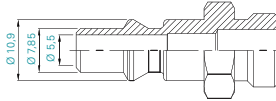
Body: nickel-plated brass/aluminium  
Tip: PA66 loaded glass with aluminium ring  
Air valve: brass  
Lock: 6-ball steel  
Gaskets: NBR



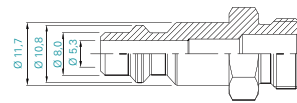
D



I



S

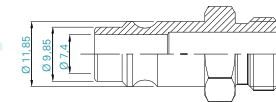
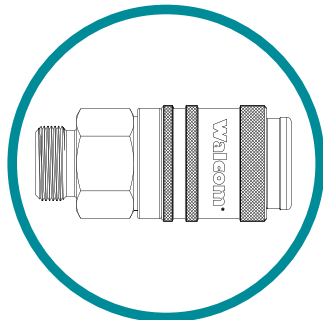
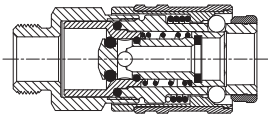


USA

### X300

#### X300 automatic coupling

Body: nickel-plated brass/anodised aluminium  
Tip: PA66 loaded glass with aluminium ring  
Air valve: brass  
Lock: 6-ball steel  
Gaskets: NBR

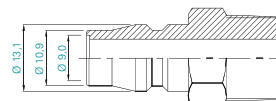
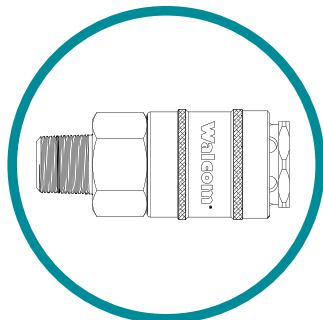
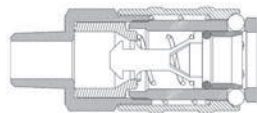


D

### X400 AUT

#### X400 semi-automatic coupling

Body: nickel-plated brass/tempered and chrome-plated steel  
Tip: nickel-plated brass  
Air valve: tropicalized steel  
Lock: 4-ball steel  
Gaskets: NBR



Jp

## TECHNICAL SPECIFICATIONS:

Professional coupling and plugs and high air flow fittings for bodywork use.

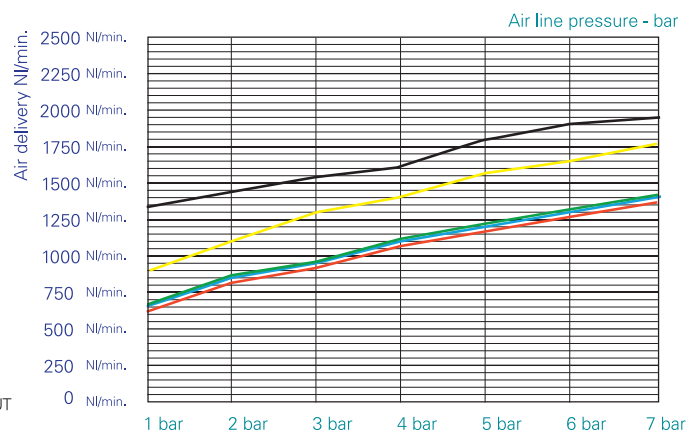
Japanese (diam. 9,2 mm) and German (diam. 7,4 mm) standards guarantee constant air flow between hose and spray gun, without choking, and air flow over 1.500 l/min at 6 bar.

Working pressure: 0 - 16 bar

Working temperature: -40°C + 80°C

— Standard D  
— Standard I  
— Standard S  
— Standard USA  
— Standard X400 AUT

## QUICK COUPLING FLOW DIAGRAM WITH 1 bar



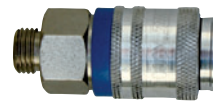
## X300 U - Male

Thread 1/4"	Ref. 10201U
-------------	-------------

Thread 3/8"	Ref. 10202U
-------------	-------------

Thread 1/2"	Ref. 10203U
-------------	-------------

Package: 25 pcs



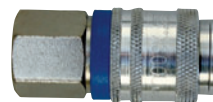
## X300 U - Female

Thread 1/4"	Ref. 10211U
-------------	-------------

Thread 3/8"	Ref. 10212U
-------------	-------------

Thread 1/2"	Ref. 10213U
-------------	-------------

Package: 25 pcs



## X300 U - With rest

Internal diameter 6 mm	Ref. 10221U
------------------------	-------------

Internal diameter 8 mm	Ref. 10222U
------------------------	-------------

Internal diameter 10 mm	Ref. 10223U
-------------------------	-------------

Package: 25 pcs



## X300 U - For rubber hose

Internal diameter 6 mm - External diameter 14 mm	Ref. 10231U
--	-------------

Internal diameter 8 mm - External diameter 17 mm	Ref. 10232U
--	-------------

Internal diameter 10 mm - External diameter 19 mm	Ref. 10233U
---	-------------

Internal diameter 8 mm - External diameter 14 mm	Ref. 10234U
--	-------------

Package: 25 pcs



## X300 U - For nylon hose with spring

Thread 6x8	Ref. 10241U
------------	-------------

Thread 8x10	Ref. 10242U
-------------	-------------

Thread 6x10	Ref. 10243U
-------------	-------------

Thread 8x12	Ref. 10244U
-------------	-------------

Thread 10x12	Ref. 10246U
--------------	-------------

Package: 25 pcs



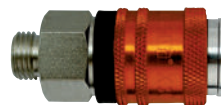
## X300 - Male

Thread 1/4"	Ref. 10251
-------------	------------

Thread 3/8"	Ref. 10252
-------------	------------

Thread 1/2"	Ref. 10253
-------------	------------

Package: 10 pcs



## X300 - Female

Thread 1/4"	Ref. 10261
-------------	------------

Thread 3/8"	Ref. 10262
-------------	------------

Thread 1/2"	Ref. 10263
-------------	------------

Package: 10 pcs



## X300 - With rest

Internal diameter 6 mm	Ref. 10271
------------------------	------------

Internal diameter 8 mm	Ref. 10272
------------------------	------------

Internal diameter 10 mm	Ref. 10273
-------------------------	------------

Package: 10 pcs



## X300 - For rubber hose

Internal diameter 6 mm - External diameter 14 mm	Ref. 10281
--	------------

Internal diameter 8 mm - External diameter 14 mm	Ref. 10282
--	------------

Internal diameter 8 mm - External diameter 17 mm	Ref. 10283
--	------------

Internal diameter 10 mm - External diameter 19 mm	Ref. 10284
---	------------

Package: 10 pcs



## X300 - For nylon hose with spring

Thread 6x8	Ref. 10291
------------	------------

Thread 8x10	Ref. 10292
-------------	------------

Thread 6x10	Ref. 10293
-------------	------------

Thread 8x12	Ref. 10294
-------------	------------

Thread 10x12	Ref. 10295
--------------	------------

Package: 10 pcs



**X400 - Male**

Thread 1/4"U	Ref. 10551
--------------	------------

Thread 3/8"U	Ref. 10552
--------------	------------

Package: 10 pcs

**X400 - Female**

Thread 1/4"U	Ref. 10651
--------------	------------

Thread 3/8"U	Ref. 10652
--------------	------------

Package: 10 pcs

**X400 - With rest**

Internal diameter 8 mm	Ref. 10555
------------------------	------------

Internal diameter 10 mm	Ref. 10556
-------------------------	------------

Package: 10 pcs

**X400 - Jp male plug**

Thread 1/4"U	Ref. 11470
--------------	------------

Thread 3/8"U	Ref. 11471
--------------	------------

Package: 10 pcs

**X400 - Jp female plug**

Thread 1/4"U	Ref. 11480
--------------	------------

Thread 3/8"U	Ref. 11481
--------------	------------

Package: 10 pcs





# X100 S

## Male

Ref. I	Thread	Ref. S	Thread	Ref. USA	Thread	Ref. GB	Thread
10501/S	1/4"	10511/S	1/4"	10521/S	1/4"	10531/S	1/4"
10502/S	3/8"	10512/S	3/8"	10522/S	3/8"	10532/S	3/8"
10503/S	1/2"	10513/S	1/2"	10523/S	1/2"	/	/



Package: 25 pcs

## Female

Ref. I	Thread	Ref. S	Thread	Ref. USA	Thread	Ref. GB	Thread
10601/S	1/4"	10611/S	1/4"	10621/S	1/4"	10631/S	1/4"
10602/S	3/8"	10612/S	3/8"	10622/S	3/8"	10632/S	3/8"



Package: 25 pcs

## For rubber hose

Ref. I	Ø int. - Ø ext.	Ref. S	Ø int. - Ø ext.	Ref. USA	Ø int. - Ø ext.	Ref. GB	Ø int. - Ø ext.
10703/S	6x14	/	/	/	/	/	/
10710/S	8x14	/	/	/	/	/	/
10707/S	8x17	/	/	/	/	/	/
10709/S	10x19	/	/	/	/	/	/



Package: 25 pcs

## For nylon hose with spring

Ref. I	Ø int. - Ø ext.	Ref. S	Ø int. - Ø ext.	Ref. USA	Ø int. - Ø ext.	Ref. GB	Ø int. - Ø ext.
10801/S	6x8	10811/S	6x8	/	/	/	/
10802/S	8x10	10812/S	8x10	10822/S	8x10	/	/
10803/S	8x12	/	/	/	/	/	/



Package: 25 pcs

## With rest


Ref. I	Ø int.	Ref. S	Ø int. - Ø ext.	Ref. USA	Ø int. - Ø ext.	Ref. GB	Ø int. - Ø ext.
/	/	10731/S	6	10741/S	6	10750/S	6
/	/	10733/S	8	10743/S	8	10751/S	8
/	/	/	/	10744/S	9	10752/S	9
/	/	10735/S	10	10745/S	10	/	/
/	/	/	/	10748/S	13	/	/




Package: 25 pcs

X90


Couplings

Ref.	Thread	<b>MALE</b> 
10400	1/8"	
10401	1/4"	

Package: 25 pcs


Ref.	Thread	<b>FEMALE</b> 
10410	1/8"	
10411	1/4"	

Package: 25 pcs


Ref.	Ø int.	<b>WITH REST</b> 
10420	6	
10421	8	

Package: 25 pcs


Plugs

Ref.	Thread	<b>MALE</b> 
11400	1/8"	
11401	1/4"	

Package: 25 pcs

Ref.	Thread	<b>FEMALE</b> 
11410	1/8"	
11411	1/4"	

Package: 25 pcs

Ref.	Ø int.	<b>WITH REST</b> 
11420	6	

Package: 25 pcs

# STEEL PLUGS FOR X100 S and X300 U

## Male

Ref. I	Thread	Ref. S	Thread	Ref. USA	Thread	Ref. GB	Thread
11001	1/4"	11011	1/4"	11021	1/4"	11031	1/4"
11002	3/8"	11012	3/8"	11022	3/8"	/	/
11003	1/2"	11013	1/2"	11023	1/2"	/	/



Package: 25 pcs

## Female

Ref. I	Thread	Ref. S	Thread	Ref. USA	Thread	Ref. GB	Thread
11101	1/4"	11111	1/4"	11121	1/4"	11131	1/4"
11102	3/8"	11112	3/8"	11122	3/8"	11132	3/8"



Package: 25 pcs

## For rubber hose

Ref. I	Ø int. - Ø ext.	Ref. S	Ø int. - Ø ext.	Ref. USA	Ø int. - Ø ext.	Ref. GB	Ø int. - Ø ext.
11170	6x10	/	/	/	/	/	/
11183	6x14	/	/	/	/	/	/
11171	8x12	/	/	/	/	/	/
11190	8x14	/	/	/	/	/	/
11187	8x17	/	/	/	/	/	/
11172	10x15	/	/	/	/	/	/
11188	10x17	/	/	/	/	/	/
11189	10x19	/	/	/	/	/	/



Package: 25 pcs

## Bayonet

Ref. I	/	Ref. S	/	Ref. USA	/	Ref. GB	/
11260	/	/	/	11262	/	/	/



Package: 25 pcs

## For rubber hose with spring

Ref. I	Ø int. - Ø ext.	Ref. S	Ø int. - Ø ext.	Ref. USA	Ø int. - Ø ext.	Ref. GB	Ø int. - Ø ext.
/	/	/	/	11220	4x6	/	/
11201	6x8	11211	6x8	11221	6x8	/	/
11202	8x10	/	/	/	/	/	/
11206	6x10	/	/	/	/	/	/
11204	8x12	/	/	/	/	/	/
11205	10x12	/	/	/	/	/	/



Package: 25 pcs

## With rest

Ref. I	Ø int.	Ref. S	Ø int.	Ref. USA	Ø int.	Ref. GB	Ø int.
/	/	/	/	11310	5	/	/
/	/	11301	6	11311	6	/	/
/	/	11303	8	11313	8	/	/
/	/	11304	10	11314	10	/	/
/	/	11305	11	11315	11	11322	11
/	/	11306	12	/	/	/	/

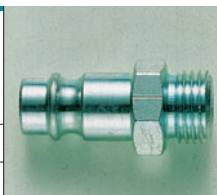


Package: 25 pcs

# STEEL PLUGS ONLY FOR X300 U and X300

## Male

Ref. D	Thread			
11041	1/4"			
11042	3/8"			
11043	1/2"			



Package: 25 pcs

## Female

	Thread			
11141	1/4"			
11142	3/8"			



Package: 25 pcs

## For rubber hose

Ref. D	Ø int. - Ø ext.			
11198	6x14			
11197	8x14			
11199	8x17			



## For rubber hose with spring

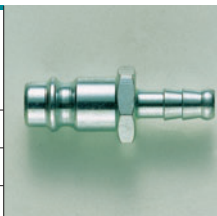
Ref. D				
11241	6x8			
11242	8x10			
11243	6x10			
11244	8x12			
11245	10x12			



Package: 25 pcs

## With rest

Ref. D	Ø int.			
11340	5			
11341	6			
11342	7			
11343	8			
11344	10			
11345	11			
11346	12			
11347	13			



Package: 25 pcs

# FITTINGS

Connections, fittings and accessories for pneumatics made of high quality brass.

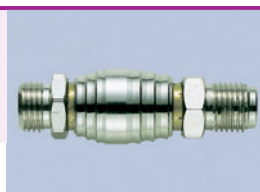
PAY ATTENTION TO THE FF SYMBOL that indicates the steel swiveling connections which prevent pipe distortion during their operation.

Designed with the exclusive assembly system by means of stainless steel snap rings and Buna-N O-RINGS positioned on the exterior of the air passage outlet which allow an air flow with no need for narrowing and with an excellent seal.

## COUPLINGS

### Male sliding cock

Ref.	Thread
12341	1/4"



Package: 25 pcs

### Male drain cock

Ref.	Thread
12370	1/8"
12371	1/4"
12372	3/8"
12373	1/2"



Package: 25 pcs

## CONNECTIONS

### Bayonet female

Ref.	Thread
13000	1/8"
13001	1/4"
13002	3/8"



Package: 25 pcs

### Bayonet with rest

Ref.	Ø int. hose
13060	6
13061	7
13062	8



### Bayonet male

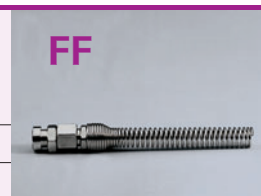
Ref.	Thread
13010	1/8"
13011	1/4"
13012	3/8"



Package: 25 pcs

### Swiveling bayonet connection for rilsan or nylon hose

Ref.	Ø int. - Ø ext.
13090	4x6
13091	6x8
13092	8x10
13093	10x12



FF

### Bayonet for rubber hose

Ref.	Ø int. - Ø ext.
13023	6x14
13033	8x14
13027	8x17
13028	10x17
13029	10x19




Package: 25 pcs

### Female for rubber hose


Ref.	Thread	Ø int. - Ø ext.
13106	1/4"	6x14
13115	1/4"	8x14
13110	1/4"	8x17
13114	3/8"	6x14
13119	3/8"	8x14
13116	3/8"	8x17




### Male for rubber hose

Ref.	Thread	Ø int.-Ø ext.	 <p>Package: 25 pcs</p>
13133	1/8"	8x17	
13136	1/4"	6x14	
13143	1/4"	8x14	
13140	1/4"	8x17	
13144	3/8"	6x14	
13149	3/8"	8x14	
13146	3/8"	8x17	


### Swiveling female connection for rilsan or nylon hose

Ref.	Thread	Ø int.-Ø ext.	<p>FF</p>  <p>Package: 25 pcs</p>
13220	1/4"	4x6	
13221	1/4"	6x8	
13222	1/4"	8x10	
13223	3/8"	6x8	
13224	3/8"	8x10	
13225	3/8"	10x12	


### Fixed bayonet for nylon or rilsan hose

Ref.	Ø int.-Ø ext.	 <p>Package: 25 pcs</p>
13180	4x6	
13181	6x8	
13182	8x10	
13183	10x12	


### Swiveling female for polyurethane hose

Ref.	Thread	Ø int.-Ø ext.	<p>FF</p>  <p>Package: 25 pcs</p>
13190	1/4"	5x8	
13191	1/4"	6x10	
13192	1/4"	6,5x10	
13193	1/4"	8x12	
13194	1/4"	10x15	

### Fixed male with rest for every type of hose


Ref.	Thread	Ø int. hose	 <p>Package: 25 pcs</p>
13231	1/8"	6	
13232	1/8"	7	
13250	1/8"	8	
13251	1/8"	9	
13233	1/4"	5	
13234	1/4"	6	
13235	1/4"	7	
13236	1/4"	8	
13237	1/4"	9	
13253	1/4"	10	
13254	1/4"	15	
13238	1/4"	11	
13239	3/8"	8	
13240	3/8"	9	
13256	3/8"	10	
13257	3/8"	12	
13258	3/8"	13	
13247	3/8"	14	
13248	3/8"	16	
13242	1/2"	11	
13243	1/2"	12	
13244	1/2"	15	
13245	1/2"	17	
13246	1/2"	19	

### Fixed female with rest for every type of hose


Ref.	Thread	Ø int. hose	 <p>Package: 25 pcs</p>
13260	1/8"	5	
13261	1/4"	5	
13262	1/4"	6	
13263	1/4"	7	
13264	1/4"	8	
13265	1/4"	9-10	
13266	3/8"	7	
13267	3/8"	8	
13268	3/8"	9-10	
13269	3/8"	11	
13271	1/2"	12	




### Double rest

Ref.	Ø int.-Ø ext.	 <p>Package: 25 pcs</p>
13300	5	
13301	6	
13303	8	
13304	9-10	
13305	11	

### Swiveling male for polyurethane hose

Ref.	Thread	Ø int.-Ø ext.	<b>FF</b>  <p>Package: 25 pcs</p>
13311	1/4"	5x8	
13312	1/4"	6,5x10	
13326	1/4"	6x10	
13327	1/4"	8x12	
13315	3/8"	8x12	
13316	1/2"	9x12	
13317	1/2"	10x16	


### Fixed male for nylon or rilsan hose

Ref.	Thread	Ø int.-Ø ext.	 <p>Package: 25 pcs</p>
13200	1/4"	4x6	
13201	1/4"	6x8	
13202	1/4"	8x10	
13204	3/8"	8x10	
13205	3/8"	10x12	


### Swiveling male for nylon or rubber hose

Ref.	Thread	Ø int.-Ø ext.	<b>FF</b>  <p>Package: 25 pcs</p>
13210	1/4"	4x6	
13211	1/4"	6x8	
13212	1/4"	8x10	
13213	3/8"	6x8	
13214	3/8"	8x10	
13215	3/8"	10x12	
13216	1/2"	12x15	
13208	3/8"	9x12	
13209	3/8"	11x14	
13217	1/2"	15x20	

### Swiveling male with rest for every type of hose

Ref.	Thread	Ø int. hose	<b>FF</b>  <p>Package: 25 pcs</p>
13330	1/4"	6	
13331	1/4"	7	
13332	1/4"	8	
13333	1/4"	9	
13334	1/4"	10	
13335	1/4"	11	
13336	3/8"	6	
13337	3/8"	8	
13338	3/8"	9	
13339	3/8"	10	
13340	3/8"	11	
13341	3/8"	12	
13342	3/8"	13	

### Swiveling female with rest for every type of hose

Ref.	Thread	Ø int. hose	<b>FF</b>  <p>Package: 25 pcs</p>
13360	1/4"	6	
13361	1/4"	7	
13362	1/4"	8	
13363	1/4"	9	
13364	1/4"	10	
13365	3/8"	6	
13366	3/8"	7	
13367	3/8"	8	
13368	3/8"	9	
13369	3/8"	10	

## FITTINGS

## Milled nut

Ref.	Thread
14000	1/4"
14001	14x1,25
14002	3/8"



Package: 25 pcs

## Female with milled nut

Ref.	Thread
14010	1/8"
14011	1/4"



Package: 25 pcs

## Male with milled nut

Ref.	Thread
14021	1/4"
14022	3/8"



Package: 25 pcs

## Double with milled nut

Ref.	Thread
14030	1/4"



Package: 25 pcs

## T with milled nuts

Ref.	Thread
14040	1/4"



Package: 25 pcs

## Cylindrical plug

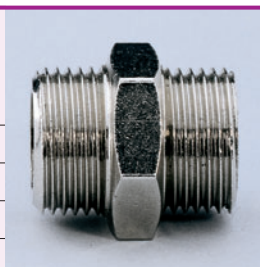
Ref.	Thread
14250	1/8"
14251	1/4"
14252	3/8"
14253	1/2"
14254	3/4"



Package: 25 pcs

## Cylindrical nipple

Ref.	Thread
14100	1/8" - 1/8"
14101	1/4" - 1/4"
14102	3/8" - 3/8"
14103	1/2" - 1/2"
14104	1/8" - 1/4"
14105	1/8" - 3/8"
14107	1/4" - 3/8"
14108	1/4" - 1/2"
14109	3/8" - 1/2"
14110	1/2" - 3/4"
14111	3/4" - 3/4"



Package: 25 pcs

## Conical nipple

Ref.	Thread
14130	1/8" - 1/8"
14131	1/4" - 1/4"
14132	3/8" - 3/8"
14133	1/2" - 1/2"
14134	1/8" - 1/4"
14135	1/8" - 3/8"
14136	1/4" - 1/2"
14137	1/4" - 3/8"
14138	3/8" - 1/2"
14139	1/2" - 3/4"



Package: 25 pcs

## Cylindrical reduction

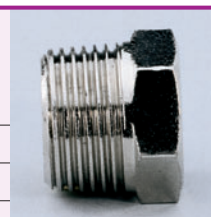
Ref.	Thread
14140	M 1/4" - F 1/8"
14141	M 3/8" - F 1/8"
14142	M 3/8" - F 1/4"
14143	M 1/2" - F 3/8"
14144	M 1/2" - F 1/4"
14145	M 3/4" - F 1/2"
14146	M 3/4" - F 3/8"
14147	M 1/2" - F 1/8"



Package: 25 pcs

## Conical reduction

Ref.	Thread
14150	M 1/4" - F 1/8"
14151	M 3/8" - F 1/8"
14152	M 3/8" - F 1/4"
14153	M 1/2" - F 3/8"
14154	M 1/2" - F 1/4"
14155	M 3/4" - F 1/2"
14156	M 3/4" - F 3/8"



Package: 25 pcs

## Extension

Ref.	Thread
14170	M 1/8" - F 1/8"
14171	M 1/8" - F 1/4"
14172	M 1/8" - F 3/8"
14174	M 1/4" - F 1/8"
14175	M 1/4" - F 1/4"
14176	M 1/4" - F 3/8"
14179	M 3/8" - F 1/4"
14180	M 3/8" - F 3/8"
14181	M 3/8" - F 1/2"
14184	M 1/2" - F 3/8"
14185	M 1/2" - F 1/2"



Package: 25 pcs

## Double female

Ref.	Thread
14200	1/8" - 1/8"
14201	1/4" - 1/4"
14202	3/8" - 3/8"
14203	1/2" - 1/2"
14204	1/8" - 1/4"
14205	1/8" - 3/8"
14206	1/2" - 1/8"
14207	1/4" - 3/8"
14208	1/4" - 1/2"
14209	3/8" - 1/2"



Package: 25 pcs

## L male/female

Ref.	Thread
14300	1/8"
14301	1/4"
14302	3/8"
14303	1/2"



Package: 25 pcs

## T female/male/female

Ref.	Thread
14340	1/8"
14341	1/4"
14342	3/8"
14343	1/2"



Package: 25 pcs

## L female/female

Ref.	Thread
14310	1/8"
14311	1/4"
14312	3/8"
14313	1/2"



Package: 25 pcs

## T female/female/female

Ref.	Thread
14350	1/8"
14351	1/4"
14352	3/8"
14353	1/2"



Package: 25 pcs

### L male/male

Ref.	Thread
14315	1/8"
14316	1/4"
14317	3/8"
14318	1/2"



Package: 25 pcs

### T female/female/male

Ref.	Thread
14355	1/8"
14356	1/4"
14357	3/8"
14358	1/2"



Package: 25 pcs

### Y female/male/female

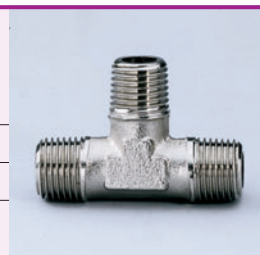
Ref.	Thread
14320	1/8"
14321	1/4"
14322	3/8"
14323	1/2"



Package: 25 pcs

### T male/male/male

Ref.	Thread
14360	1/8"
14361	1/4"
14362	3/8"
14363	1/2"



Package: 25 pcs

### Y female/female/female

Ref.	Thread
14330	1/8"
14331	1/4"
14332	3/8"
14333	1/2"



Package: 25 pcs

### Cross F.F.F.M.

Ref.	Thread
14370	1/8"
14371	1/4"
14372	3/8"
14373	1/2"



Package: 25 pcs

### Cross M.M.M.M

Ref.	Thread
14375	1/8"
14376	1/4"
14377	3/8"
14378	1/2"



Package: 25 pcs

### Cross F.F.F.F

Ref.	Thread
14380	1/8"
14381	1/4"
14382	3/8"
14383	1/2"



Package: 25 pcs

### Male quick plug "D" with milled nut

Ref.	Thread
11045	1/4"



Package: 25 pcs

### Bayonet seals

Ref.
60920

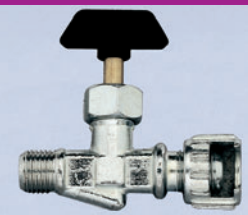


Package: 100 pcs

# ACCESSORIES FOR PNEUMATIC

## NEEDLE AIR LINE TAPS

### Male with milled nut

Ref.	Thread	
12010	1/4"	
12011	3/8"	
12012	1/2"	

Package: 25 pcs


## MINI BALL VALVES

### Male with milled nut

Ref.	Thread	
12110	1/4"	
12111	3/8"	

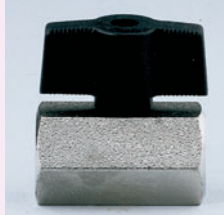
Package: 25 pcs

### Male/Male

Ref.	Thread	
12131	1/4"	
12132	3/8"	


Package: 25 pcs

### Female/Female

Ref.	Thread	
12150	1/8"	
12151	1/4"	
12152	3/8"	
12153	1/2"	

Package: 25 pcs

### Male/ Female

Ref.	Thread	
12170	1/8"	
12171	1/4"	
12172	3/8"	
12173	1/2"	

Package: 25 pcs

# QUICK FITTINGS

## Cylindrical male

Ref.	Thread	Ø int. - Ø ext.
15000	1/8"	4x6
15001	1/4"	4x6
15002	1/8"	6x8
15003	1/4"	6x8
15006	1/4"	8x10
15007	3/8"	8x10
15009	3/8"	10x12



Package: 25 pcs

## Straight

Ref.	Ø int. - Ø ext.
15070	4x6
15071	6x8
15072	8x10
15073	10x12



Package: 25 pcs

## L male

Ref.	Thread	Ø int. - Ø ext.
15090	1/8"	4x6
15093	1/4"	6x8
15096	1/4"	8x10
15098	1/2"	8x10
15099	3/8"	10x12



Package: 25 pcs

## L female

Ref.	Thread	Ø int. - Ø ext.
15121	1/4"	6x8



Package: 25 pcs

## Elbow

Ref.	Ø hose
15140	4x6
15141	6x8
15142	8x10
15143	10x12



Package: 25 pcs

## T central male

Ref.	Thread	Ø hose
15160	1/8"	4x6
15162	1/8"	6x8
15163	1/4"	6x8
15164	3/8"	6x8
15165	1/8"	8x10
15166	1/4"	8x10
15169	3/8"	10x12



Package: 25 pcs

## T EE

Ref.	Ø int. - Ø ext.
15180	4x6
15181	6x8
15182	8x10
15183	10x12



Package: 25 pcs

## Blocking nut

Ref.	Ø hose
15400	4x6
15401	6x8
15402	8x10
15403	10x12



Package: 25 pcs



# CONNECTIONS WITH FERRULES

## Conical male

Ref.	Thread	Ø ext. hose
16000	1/8"	6
16001	1/4"	6
16002	1/8"	8
16003	1/4"	8
16004	3/8"	8
16005	1/4"	10
16006	3/8"	10
16007	3/8"	12



Package: 25 pcs

## Straight

Ref.	Ø ext. hose
16040	6
16041	8
16042	10
16043	12



Package: 25 pcs

## L male

Ref.	Thread	Ø ext. hose
16060	1/8"	6
16061	1/4"	6
16062	1/8"	8
16063	1/4"	8
16064	3/8"	8
16065	1/4"	10
16066	3/8"	10
16067	3/8"	12
16068	1/2"	12



Package: 25 pcs

## T central male

Ref.	Thread	Ø ext. hose
16120	1/8"	6
16121	1/4"	6
16122	1/8"	8
16123	1/4"	8
16124	3/8"	8
16125	1/4"	10
16126	3/8"	10
16127	3/8"	12
16128	1/2"	12



Package: 25 pcs

## Elbow

Ref.	Ø ext. hose
16100	6
16101	8
16102	10
16103	12



Package: 25 pcs

## T EE

Ref.	Ø ext. hose
16160	6
16161	8
16162	10
16163	12



Package: 25 pcs

## Blocking nut

Ref.	Ø ext. hose
16300	6
16301	8
16302	10
16303	12



Package: 25 pcs

## Brass ferrule

Ref.	Ø ext. hose
16320	6
16321	8
16322	10
16323	12



Package: 25 pcs



# AUTOMATIC FITTINGS

## Conical male

Ref.	Thread	Ø ext. hose
17000	1/8"	4
17001	1/8"	6
17002	1/4"	6
17003	1/8"	8
17004	1/4"	8
17005	3/8"	8
17006	1/4"	10
17007	3/8"	10
17008	1/4"	12
17009	3/8"	12



Package: 25 pcs

## Straight

Ref.	Ø ext. hose
17040	4
17041	6
17042	8
17043	10
17044	12



Package: 25 pcs

## L male

Ref.	Thread	Ø ext. hose
17101	1/8"	4
17102	1/8"	6
17104	1/8"	8
17105	1/4"	8
17107	1/4"	10
17108	3/8"	10
17109	1/4"	12
17110	3/8"	12



Package: 25 pcs

## L swiveling male

Ref.	Thread	Ø ext. hose
17130	1/8"	4
17131	1/8"	6
17132	1/4"	6
17133	1/8"	8
17134	1/4"	8
17135	3/8"	8
17136	1/4"	10
17137	3/8"	10
17138	1/4"	12
17139	3/8"	12



Package: 25 pcs

## Elbow

Ref.	Ø ext. hose
17150	4
17151	6
17152	8
17153	10
17154	12



Package: 25 pcs

## Single hollow bolt

Ref.	Thread	Ø ext. hose
17400	M5	4
17401	1/8"	4
17402	1/8"	6
17403	1/4"	6
17404	1/8"	8
17405	1/4"	8
17406	1/4"	10
17407	3/8"	10



Package: 25 pcs

## T central male \*swiveling

Ref.	Thread	Ø ext. hose
17201	1/8"	4
17202	1/8"	6
17203*	1/4"	6
17204	1/8"	8
17205	1/4"	8
17206*	3/8"	8
17207	1/4"	10
17208	3/8"	10
17209	1/4"	12
17210	3/8"	12



Package: 25 pcs

## Female

Ref.	Thread	Ø ext. hose
17020	1/8"	4
17021	1/8"	6
17022	1/4"	6
17023	1/8"	8
17024	1/4"	8
17025	1/4"	10



Package: 25 pcs

## T EE

Ref.	Ø ext. hose
17300	4
17301	6
17302	8
17303	10
17304	12



Package: 25 pcs

## Bulckhead straight

Ref.	Ø ext. hose
17050	4
17051	6
17052	8
17053	10
17054	12



Package: 25 pcs

# MODULAR FILTERS

## REGULATORS LUBRICATORS

Ideal for use in bodyshops, mechanical garages and wherever there is need to treat the air and adjust the flow. From simple regulators, filters or lubricators to filter groups for pneumatic installation (filter+lubricator) or spray installations (filter+coalescent microfilter).

### MICROPRESSURE REGULATOR

Membrane micro regulator, equipped with regulation knob with relieving lock.  
Working pressure: MAX 16 bar  
Regulator range: 0-8 bar  
Manometer connection: M 1/8"

Diameter air inlet 1/8"	Ref. 61100
Diameter air inlet 1/4"	Ref. 61101

Package: 1 pcs  
Weight: 90 g



Recommended use:



### PRESSURE REGULATOR

Membrane micro regulator, equipped with regulation knob with relieving lock.  
Working pressure: MAX 16 bar  
Regulator range: 0-8 bar  
Manometer connection: M 1/8"

Diameter air inlet 1/4" - (*)	Ref. 61111
Diameter air inlet 3/8" - (**)	Ref. 61112
Diameter air inlet 1/2" - (***)	Ref. 61113

Package: 1 pcs  
(\*) Weight: 135 g - (\*\*) Weight: 320 g - (\*\*\*) Weight: 440 g



Recommended use:



### FILTER

Filter with filtering element with 20 micron porosity.  
Special reinforced bowl.  
Max inlet pressure: MAX 16 bar

Diameter air inlet 1/4" - (*)	Ref. 61121
Diameter air inlet 3/8" - (**)	Ref. 61122
Diameter air inlet 1/2" - (***)	Ref. 61123

Package: 1 pcs  
(\*) Weight: 115 g - (\*\*) Weight: 230 g - (\*\*\*) Weight: 355 g



Recommended use:



### FILTER REGULATOR

Membrane regulator filter with 20 micron synthetic filtering element, equipped with regulation knob with relieving lock.

Special reinforced cup  
Working pressure: MAX 16 bar  
Regulator range: 0-8 bar  
Manometer connection: M 1/8"

Diameter air inlet 1/4" - (*)	Ref. 61131
Diameter air inlet 3/8" - (**)	Ref. 61132
Diameter air inlet 1/2" - (***)	Ref. 61133

Package: 1 pcs - (\*) Weight: 115 g - (\*\*) Weight: 230 g - (\*\*\*) Weight: 355 g



Recommended use:



## COALESCENT MICROFILTER

Coalescent microfilter.  
Efficiency: 99,9%

Diameter air inlet 1/4" - (*)	Ref. 61201
Diameter air inlet 3/8" - (**)	Ref. 61202
Diameter air inlet 1/2" - (***)	Ref. 61203

Package: 1 pcs

(\*) Weight: 115 g - (\*\*) Weight: 225 g - (\*\*\*) Weight: 345 g



Recommended use:



## LUBRICATOR

Lubricator working with oil fogging propotional system.  
Special reinforced bowl.  
Max inlet pressure: MAX 16 bar

Diameter air inlet 1/4" - (*)	Ref. 61141
Diameter air inlet 3/8" - (**)	Ref. 61142
Diameter air inlet 1/2" - (***)	Ref. 61143

Package: 1 pcs

(\*) Weight: 115 g - (\*\*) Weight: 230 g - (\*\*\*) Weight: 360 g



Recommended use:



## FILTER REGULATOR WITH LUBRICATOR

Filter group which associates the features of the filter regulator with those of the lubricator.

Diameter air inlet 1/4" - (*)	Ref. 61151
Diameter air inlet 3/8" - (**)	Ref. 61152
Diameter air inlet 1/2" - (***)	Ref. 61153

Package: 1 pcs

(\*) Weight: 310 g - (\*\*) Weight: 675 g - (\*\*\*) Weight: 975 g



Recommended use:



## FILTER - REGULATOR - LUBRICATOR

Filter group which associates the features of the filter, the regulator and those of the lubricator.

Diameter air inlet 1/4" - (*)	Ref. 61161
Diameter air inlet 3/8" - (**)	Ref. 61162
Diameter air inlet 1/2" - (***)	Ref. 61163

Package: 1 pcs

(\*) Weight: 380 g - (\*\*) Weight: 850 g - (\*\*\*) Weight: 1,25 Kg



Recommended use:



## ACCESSORIES

Unit connection kit for 1/8" and 1/4"	Ref. 61190
Unit connection kit for 3/8"	Ref. 61191
Unit connection kit for 1/2"	Ref. 61194
Wall unit connection for 1/8" and 1/4"	Ref. 61192
Wall unit connection for 3/8" and 1/2"	Ref. 61193
Manometer with rear connection 1/8", diameter 40 mm (*)	Ref. 61301

Package: 1 pcs - (\*) 4 pcs

# MANOMETER AND AIR COMPRESSED ACCESSORIES

## MANOMETER

Ref. 61300

Radial connection - M 1/4"  
Double pressure gauge scale 0 - 12 bar / 0 - 170 psi  
Diameter 63 mm

Package: 4 pcs  
Weight: 385 g



## MANOMETER

Double pressure gauge scale 0 - 12 bar / 0 - 170 psi

Rear connection - M 1/8" - diameter 40 mm (*)	Ref. 61301
Rear connection - M 1/8" - diameter 50 mm (**)	Ref. 61302
Rear connection - M 1/4" - diameter 63 mm (***)	Ref. 61303

Package: 4 pcs  
(\*) Weight: 290 g - (\*\*) Weight: 335 g - (\*\*\*) Weight: 345 g



## MANOMETER - CEE

Pressure gauge scale 0 - 10 bar (only [Ref. 61314](#) double scale 0 - 10 bar / 0 - 140 psi)

Rear connection - M 1/4" - diameter 63 mm (*)	Ref. 61310
Rear connection - M 1/4" - diameter 80 mm (**)	Ref. 61311
Rear connection - M 1/4" - diameter 63 mm (***)	Ref. 61314

Package: 4 pcs - (only [Ref. 61311](#) package 1 pcs)  
(\*) Weight: 405 g - (\*\*) Weight: 230 g - (\*\*\*) Weight: 405 g



## MANOMETER

Ref. 61313

Rear connection - M 1/4"  
Double pressure gauge scale 0 - 10 bar / 0 - 140 psi  
Diameter 80 mm

Package: 4 pcs  
Weight: 105 g



## MICROPRESSURE REDUCER

Ref. 61000

Micropressure reducer.  
Needle air line tap M 1/4"  
Connection: M 1/4"  
Pressure gauge scale 0 - 12 bar

Package: 3 pcs  
Weight: 905 g



## PRESSURE REDUCER

Pressure reducer with ceramic filter and manometer.  
Outlet with 2 needle air line taps.

Connection - M 3/8" - pressure gauge scale 0 - 12 bar (*)	Ref. 61001
Connection - M 1/2" - pressure gauge scale 0 - 16 bar (**)	Ref. 61002
Connection - F 1/2" - pressure gauge scale 0 - 12 bar (***)	Ref. 61003

Package: 2 pcs - (only Ref. 61003 package 1 pcs)

(\*) Weight: 1,3 Kg - (\*\*) Weight: 2,1 Kg - (\*\*\*) Weight: 1,2 Kg



## SAFETY VALVE

Model with connection

Connection - M 1/4" - weight: 340 g - package: 5 pcs	Ref. 61050
Connection - M 3/8" - weight: 520 g - package: 5 pcs	Ref. 61051
Connection - M 3/8" - weight: 520 g - package: 5 pcs	*Ref. 61051/CE
Connection - M 1/2" - weight: 440 g - package: 3 pcs	Ref. 61052
Connection - M 1/2" - weight: 440 g - package: 3 pcs	*Ref. 61052/CE
Connection - M 3/4" - weight: 630 g - package: 2 pcs	Ref. 61053
Connection - M 3/4" - weight: 630 g - package: 2 pcs	*Ref. 61053/CE

(\*) Versions at 10 bar with EC approved certificate.



## AIR PRESSURE SWITCH

Air pressure switch with drain valve.

Mini monophase model up to 4 HP - (*)	Ref. 61060
Special mini triphase model up to 5,5 HP - (**)	Ref. 61061

Package: 1 pcs

(\*) weight: 310 g - (\*\*) weight: 605 g



## WITHHOLDING VALVE

Ref. 61065

Horizontal withholding valve with connection for nylon hose  
Connection: F 1/2" - M 3/8"

Package: 5 pcs

Weight: 865 g



# HOSES

Complete and professional air hose range for any type of use, in various lengths and versions. From high performance Polyurethane to flexible Ragno, to efficient Rilsan to the proven and always reliable Nylon, Rubber and PVC; Walmec presents the new Rubberflex <sup>THT/SR</sup> hose with high performance in terms of sturdiness, durability, seal, flexibility and temperature resistance.

## STRAIGHT POLYURETHANE

### 100 m coil

Substrate and cover: 100% polyurethane  
Reinforcement: 550/1100 Trevira Heochst polyester yarn  
Working pressure: 20 bar - exploding pressure: 60 bar  
Temperature: - 25°C + 60°C

Internal diameter 6 mm - external diameter 10 mm	Ref. 60200
Internal diameter 8 mm - external diameter 12 mm	Ref. 60201
Internal diameter 10 mm - external diameter 14,5 mm	Ref. 60202

Package: 1 pcs



## STRAIGHT POLYURETHANE

### 10 m coil with 2 swiveling female 1/4" fittings

Substrate and cover: 100% polyurethane  
Reinforcement: 550/1100 Trevira Hoechst polyester yarn  
Working pressure: 20 bar - exploding pressure: 60 bar  
Temperature: - 25°C + 60°C

Internal diameter 6 mm - external diameter 10 mm	Ref. 60210
Internal diameter 8 mm - external diameter 12 mm	Ref. 60211
Internal diameter 10 mm - external diameter 14,5 mm	Ref. 60212

Package: 1 pcs



## STRAIGHT POLYURETHANE

### 25 m coil with 2 swiveling female 1/4" fittings.

Substrate and cover: 100% polyurethane  
Reinforcement: 550/1100 Trevira Hoechst polyester yarn  
Working pressure: 20 bar - exploding pressure: 60 bar  
Temperature: - 25°C + 60°C

Internal diameter 6 mm - external diameter 10 mm	Ref. 60220
Internal diameter 8 mm - external diameter 12 mm	Ref. 60221
Internal diameter 10 mm - external diameter 14,5 mm	Ref. 60222

Package: 1 pcs



## RAGNO HOSE

### 50 m coil

Substrate and cover: polyurethane anti-abrasive and thermoplastic rubber  
Reinforcement: polyester yarn  
Working pressure: 20 bar - exploding pressure: 60 bar  
Temperature: - 20°C + 60°C

Internal diameter 10 mm - external diameter 15 mm	Ref. 60250
Internal diameter 8 mm - external diameter 12 mm	Ref. 60254

Package: 1 pcs





RAGNO HOSE

Ref. 60252

**10 m coil** with fittings  
Substrate and cover: polyurethane anti-abrasive and thermoplastic rubber  
Reinforcement: polyester yarn  
Working pressure: 20 bar - exploding pressure: 60 bar  
Temperature: - 20°C + 60°C  
Internal diameter 10 mm - external diameter 15 mm

Package: 1 pcs



RUBBERFLEX THT/SR HOSE

**100 m coil**  
Sub-layer and cover EPDM rubber  
Reinforcement: Polyamide fabric  
Working pressure: 15 bar  
Exploding pressure: 30 bar  
Temperature: - 25°C + 140°C

Ref. 60302

Internal diameter 13 mm - external diameter 19 mm

Package: 1 pcs



RUBBERFLEX THT/SR HOSE

**10 m coil** with fittings  
Sub-layer and cover EPDM rubber  
Reinforcement: Polyamide fabric  
Working pressure: 15 bar  
Exploding pressure: 30 bar  
Temperature: - 25°C + 140°C

Internal diameter 10 mm - external diameter 15 mm

Ref. 60257

Internal diameter 13 mm - external diameter 19 mm

Ref. 60258

Package: 1 pcs



POLYURETHANE SPIRAL HOSE

**4 m spiral hose** with one straight extension  
Working pressure: 20 bar - exploding pressure: 60 bar  
Temperature: - 25°C + 60°C

Internal diameter 3,6 mm - external diameter 6 mm

Ref. 60030

Internal diameter 5 mm - external diameter 8 mm

Ref. 60031

Package: 5 pcs



POLYURETHANE SPIRAL HOSE

**8 m spiral hose** with 2 straight extensions  
Working pressure: 20 bar - exploding pressure: 60 bar  
Temperature: - 25°C + 60°C

Internal diameter 3,6 mm - external diameter 6 mm

Ref. 60040

Internal diameter 5 mm - external diameter 8 mm

Ref. 60041

Internal diameter 6,5 mm - external diameter 10 mm

Ref. 60042

Internal diameter 8 mm - external diameter 12 mm

Ref. 60043

Internal diameter 10 mm - external diameter 16 mm \*

Ref. 60044

Package: 2 pcs - \* Package: 1 pcs



## POLYURETHANE SPIRAL HOSE

**40 m spiral hose** without straight extensions

Working pressure: 20 bar- exploding pressure: 60 bar

Temperature: - 25°C + 60°C

Internal diameter 5 mm - external diameter 8 mm	Ref. 60051
Internal diameter 6,5 mm - external diameter 10 mm	Ref. 60052
Internal diameter 8 mm - external diameter 12 mm	Ref. 60053
Internal diameter 10 mm - external diameter 16 mm	Ref. 60054

Package: 1 pcs



## POLYURETHANE SPIRAL HOSE Ref. 60520

**4 m polyurethane spiral hose** equipped with PROFI blow gun with silenced nozzle meeting EEC regulations (ref. 50006) and 2 swiveling fittings M 1/4" with protective steel springs.

Package: 5 pcs



## RILSAN SPIRAL HOSE

**Rilsan spiral hose**

Working pressure: 20 bar

Basic package: 6 x 8 = 270 m; 8 x 10 = 180 m; 10 x 12 = 120 m

Internal diameter 6 mm - ext 8 mm - length 10 m - 27 pcs	Ref. 60007
Internal diameter 6 mm - ext 8 mm - length 15 m - 18 pcs	Ref. 60008
Internal diameter 6 mm - ext 8 mm - length 30 m - 9 pcs	Ref. 60009
Internal diameter 8 mm - ext 10 mm - length 10 m - 18 pcs	Ref. 60012
Internal diameter 8 mm - ext 10 mm - length 15 m - 12 pcs	Ref. 60013
Internal diameter 8 mm - ext 10 mm - length 30 m - 6 pcs	Ref. 60014
Internal diameter 10 mm - ext 12 mm - length 10 m - 12 pcs	Ref. 60017
Internal diameter 10 mm - ext 12 mm - length 15 m - 8 pcs	Ref. 60018
Internal diameter 10 mm - ext 12 mm - length 30 m - 4 pcs	Ref. 60019



## STRAIGHT RILSAN HOSE

**100 m straight rilsan hose** - Working pressure: 20 bar

Internal diameter 4 mm - ext 6 mm	Ref. 60326
Internal diameter 6 mm - ext 8 mm	Ref. 60327
Internal diameter 8 mm - ext 10 mm	Ref. 60328
Internal diameter 10 mm - ext 12 mm	Ref. 60329

Package: 1 pcs



# RUBBER

## 100 m straight rubber hose

Working pressure: 20 bar

Internal diameter 6 mm - external diameter 14 mm	Ref. 60300
Internal diameter 8 mm - external diameter 17 mm	Ref. 60301

Package: 1 pcs



# NYLON

## Plastic coated nylon 6 hose

Working pressure: 25 bar

Basic package: 6 x 8=270 m; 8 x 10 =180 m; 10 x 12 =120 m

Internal diameter 6 mm - ext 8 mm - length 10 m - 27 pcs	Ref. 60107
Internal diameter 6 mm - ext 8 mm - length 15 m - 18 pcs	Ref. 60108
Internal diameter 6 mm - ext 8 mm - length 30 m - 9 pcs	Ref. 60109
Internal diameter 8 mm - ext 10 mm - length 10 m - 18 pcs	Ref. 60112
Internal diameter 8 mm - ext 10 mm - length 15 m - 12 pcs	Ref. 60113
Internal diameter 8 mm - ext 10 mm - length 30 m - 6 pcs	Ref. 60114
Internal diameter 10 mm - ext 12 mm - length 10 m - 12 pcs	Ref. 60117
Internal diameter 10 mm - ext 12 mm - length 15 m - 8 pcs	Ref. 60118
Internal diameter 10 mm - ext 12 mm - length 30 m - 4 pcs	Ref. 60119



# PVC

Ref. 60330

## Clear hose in plastified PVC

Working pressure: 20 bar

Internal diameter 8 mm - ext 13 mm

Length 100 m

Package: 1 pcs





# HOBBY LINE

Asturomec® also means D.I.Y. : in fact in addition to the range for professionals, there is also a dedicated D.I.Y. range. Handy, easy to use and versatile products to meet all D.I.Y. needs; new, attractive packaging for point of sale make the displaying easy, providing high product visibility. Available in carton boxes, blister packs or handy display units.



## PAINT SPRAY GUNS:

# PRIMA

- New conception spray gun for D.I.Y. and not - D.I.Y.
- Body entirely in aluminium
- Ergonomic and functional

- High precision of product and fan regulation
- New anti-solvent sealing gaskets

### PRIMA

(with 680 cc nylon tank) - Ref. 296\*\*

Ideal for all types of paint and for work on any surfaces.

Body: polished aluminium

Cap: nickel-plated zamak

Needle-nozzle: brass

Adjustments: product -fan

Weight: 645 g

Working pressure: 2,0 - 3,5 bar

Air consumption: 180 - 280 l/min.

Nozzle Ø: 1,2 - 1,5 - 1,7 - 1,8 - 2,0 - 2,5

500 cc aluminium tank version (Weight: 545 g)

Ref. 297\*\*

1000 cc aluminium tank version (Weight: 595 g)

Ref. 298\*\*



NOTE:  
add nozzle Ø to Ref. (\*\*)

Recommended use:



### PRIMA

Ref. 295\*\*

Ideal for all types of paint and for work on any surfaces.

Bayonet suction cup: aluminium 1000 cc

Body: polished aluminium

Cap: nickel-plated zamak

Needle-nozzle: brass

Adjustments: product -fan

Weight: 720 g

Working pressure: 2,0 - 3,5 bar

Air consumption: 180 - 280 l/min.

Nozzle Ø: 1,2 - 1,5 - 1,7 - 1,8 - 2,0 - 2,5



NOTE:  
add nozzle Ø to Ref. (\*\*)

Recommended use:



### SPARE PARTS

Needle-nozzle-air cap for **PRIMA**

Nozzle diameter: 1,2

Ref. 40130

Nozzle diameter: 1,5

Ref. 40131

Nozzle diameter: 1,7

Ref. 40132

Nozzle diameter: 1,8

Ref. 40133

Nozzle diameter: 2,0

Ref. 40134

Nozzle diameter: 2,5

Ref. 40135



Recommended use:



# COMPLETE RANGE OF: COMPRESSED AIR GUNS

Blow guns: PA - PA/L  
Washing guns: NE/S - NE

Sandblasting guns: PS/E - PS/ES  
Protective and sealant guns: TS/ES - TS/E

## PA

Ref. 50080

Aluminium blow gun suitable for every use.  
Short nozzle  
Working pressure: 1,0 - 6,0 bar

Weight: 2,1 Kg  
Package: 12 pcs



Recommended use:



## PA/L

Ref. 50081

Aluminium blow gun with 150 mm long straight barrel  
Working pressure: 1,0 - 6,0 bar

Weight: 1,8 Kg  
Package: 8 pcs



Recommended use:



## NE/S

Ref. 50086

Aluminium washing gun  
Bayonet tank with screw closure: 1000 cc aluminium  
Adjustable liquid atomiser nozzle: brass  
Extra large filler opening - bayonet closure  
Working pressure: 2,0 - 8,0 bar

Weight: 920 g  
Package: 2 pcs



Recommended use:



## NE

Ref. 50085

Aluminium washign gun  
Bayonet tank with screw closure: 1000 cc painted steel  
Adjustable liquid atomiser nozzle: brass  
Working pressure: 2,0 - 8,0 bar

Weight: 1,1 Kg  
Package: 2 pcs



Recommended use:



**PS/E**

Ref. 50090

Sanblasting gun suitable for medium surfaces.

Body: aluminium

Nozzle: super-tough cemented steel Ø 6 mm with adjustable sand delivery

Immersed hoses: 2 m hose - diameter 8x13

Working pressure: 5,0 - 8,0 bar

Weight: 640 g

Package: 1 pcs



Recommended use:

**PS/ES**

Ref. 50091

Sanblasting gun suitable for medium surfaces

Bayonet tank with screw closure: 1000 cc aluminium

Body: aluminium

Nozzle: super-tough cemented steel Ø 6 mm with adjustable sand delivery

Working pressure: 5,0 - 8,0 bar

Weight: 770 g

Package: 1 pcs



Recommended use:

**TS/ES**

Ref. 50096

Gun for applying single component and two component sound-proofing protective compounds, whether pre-mixed including polyurethane-based compounds or loose.

Bayonet tank with screw closure: 1000 cc aluminium

Body: aluminium

Working pressure: 2,0 - 5,0 bar

Weight: 670 g

Package: 1 pcs



Recommended use:

**TS/E**

Ref. 50095

Gun for applying single component soundproofing protective compounds including polyurethane-based compounds and protective waxes in pre-packed 1 l tins.

Body: aluminium with disposable connector in Hostaform C®.

Featuring: 60 cm hose extension with special nozzle for box parts

Working pressure: 2,0 - 5,0 bar

Weight: 220 g

Package: 1 pcs



Recommended use:

**NOZZLE**

Ref. 0920901

Hostaform C® connection adjustable. Spare part for TS/E and TS/N.

Weight: 30 g

Package: 1 pcs



Recommended use:





# Products available in **BLISTER**

The blister pack programme is an eye-catching and customer-friendly means of presenting the range at the sales point. The products, inside an attractive and understandable blister pack can be displayed on any wall mounting, therefore rationing space and obtaining a notable visible effect which facilitates sales.

## **UR/S PLUS** (with 680 cc nylon tank) - Ref. 27314/B

Gravity feed spray gun  
Nozzle Ø: 1,4

Blister dimension: 40x20,5 cm  
Weight: 925 g  
Package: 6 pcs

See features on page 15 - SPRAY GUN section



## **UR PLUS** (with 1000 cc aluminium tank) - Ref. 27017/B

Spray gun with suction feed for every type of spraying  
Nozzle Ø: 1,7

Blister dimension: 40x20,5 cm  
Weight: 1,1 Kg  
Package: 6 pcs

See features on page 15 - SPRAY GUN section



## **PRIMA** (with 680 cc nylon tank) - Ref. 29615/B

Gravity feed spray gun ideal for D.I.Y.  
Nozzle Ø: 1,5

Blister dimension: 40x20,5 cm  
Weight: 775 g  
Package: 6 pcs

See features on page 94 - HOBBY LINE section



## **PRIMA** (with 1000 cc aluminium tank) - Ref. 29517/B

Gravity feed spray gun ideal for D.I.Y.  
Nozzle Ø: 1,7

Blister dimension: 40x20,5 cm  
Weight: 870 g  
Package: 6 pcs

See features on page 94 - HOBBY LINE section



## **ES/RV & DECOR KIT** (with 250 cc nylon tank) - Ref. 34707/B

Mini spray gun for decorations and touch-ups  
Nozzle Ø: 0,7  
Standard: 3 glass cup, 20 cc, ES/RV adapter to be screwed onto the body

Blister dimension: 40x20,5 cm  
Weight: 740 g  
Package: 2 pcs

See features on page 17-18 - SPRAY GUN section



**PA**

Ref. 50080/B

Aluminium blow gun suited for any use  
Short nozzle

Blister dimension: 20x20,5 cm

Weight: 200 g

Package: 10 pcs

See features on page 95 - HOBBY LINE section

**PA/L**

Ref. 50081/B

Blow gun with aluminium body  
150 mm long barrel

Blister dimension: 20x20,5 cm

Weight: 250 g

Package: 10 pcs

See features on page 95 - HOBBY LINE section

**PA/4N**

Ref. 50047/B

Blow gun with nylon body.  
Short nozzle

Blister dimension: 20x20,5 cm

Weight: 220 g

Package: 10 pcs

See features on page 44 - COMPRESSED AIR GUNS section

**PA/4NL**

Ref. 50048/B

Blow gun with nylon body.  
150 mm long barrel

Blister dimension: 20x20,5 cm

Weight: 255 g

Package: 10 pcs

See features on page 44 - COMPRESSED AIR GUNS section

**PG/S**

Ref. 50106/B

Inflating gun with nylon body

Blister dimension: 40x20,5 cm

Weight: 510 g

Package: 10 pcs

See features on page 50 - COMPRESSED AIR GUNS section

**PG/S CEE OM**

Ref. 50108/OB

Inflating gun to ECC standards.

Blister dimension: 40x20,5 cm

Weight: 530 g

Package: 10 pcs

See features on page 50 - COMPRESSED AIR GUNS section



## INFLATING HEAD

Ref. 50129/B

2 spare inflating heads (ref.50121) for inflating guns.

Blister dimension: 7x14 cm

Weight: 65 g

Package: 12 pcs

See features on page 51 - COMPRESSED AIR GUNS section



## INFLATING KIT

Ref. 50125/B

Inflating kit made of 3 special inflating heads for: bicycles, boats and balls

Blister dimension: 7x14 cm

Weight: 65 g

Package: 12 pcs

See features on page 51 - COMPRESSED AIR GUNS section



## N4

(with 1000 cc aluminium tank) - Ref. 50173/B

Aluminium washing gun

Adjustable liquid atomiser nozzle

Blister dimension: 47x20,5 cm

Weight: 630 g

Package: 8 pcs

See features on page 53 - COMPRESSED AIR GUNS section



## NE

(with 1000 cc aluminium tank) - Ref. 50085/B

Aluminium washing gun with adjustable liquid atomiser

Blister dimension: 47x20,5 cm

Weight: 630 g

Package: 8 pcs

See features on page 95 - HOBBY LINE section



## HYDROJET

Ref. 50160/B

Gun for mixing liquids with compressed air, manufactured in Hostaform C®

Blister dimension: 47x20,5 cm

Weight: 440 g

Package: 1 pcs

See features on page 53 - COMPRESSED AIR GUNS section



## SUPERMISTRAL

Ref. 50300/B

Sandblasting gun suitable for work on small surfaces and fitted with automatic sand recovery system. Includes 4 rubber nozzles and 1 abrasive sand box of g 700.

Blister dimension: 33x47 cm

Weight: 2,6 Kg

Package: 1 pcs

See features on page 56 - COMPRESSED AIR GUNS section



**MISTRAL**

Ref. 50301/B

Sandblasting gun suitable for work on small surfaces, includes 1 abrasive sand box of g 700

Blister dimension: 33x47 cm

Weight: 2,4 Kg

Package: 1 pcs

See features on page 56 - COMPRESSED AIR GUNS section

**PS/E**

Ref. 50090/B

Sandblasting gun for suitabel work on medium surfaces, cemented steel nozzle with sand flow rate adjustment.

Blister dimension: 40x20,5 cm

Weight: 650 g

Package: 6 pcs

See features on page 96 - HOBBY LINE section

**TS/E**

Ref. 50095/B

Gun for applying single component protective compounds in pre-packed 1 l tins. Supplied with 2 disposable Hostaform C® nozzle.

Blister dimension: 40x20,5 cm

Weight: 580 g

Package: 10 pcs

See features on page 96 - HOBBY LINE section

**EOLO**

Ref. 50151/B

Vacuum cleaning for cleaning inside motor vehicles.

Blister dimension: 26x40 cm

Weight: 530 g

Package: 1 pcs

See features on page 62 - COMPRESSED AIR GUNS section

**MI**

Ref. 62000/B

Air impact wrench 1/2"

Blister dimension: 24x30 cm

Weight: 2,3 Kg

Package: 1 pcs

See features on page 62 - PNEUMATIC TOOLS section

**MK**

Ref. 62005/B

Pneumatic ratchet wrench 1/2"

Blister dimension: 15x36 cm

Weight: 1,27 Kg

Package: 1 pcs

See features on page 62 - PNEUMATIC TOOLS section



**MS**

Ref. 62002/B

Air hammer

Blister dimension: 21x32 cm

Weight: 1,6 kg

Package: 1 pcs

See features on page 64 - PNEUMATIC TOOLS section

**MT**

Ref. 62004/B

Reversible air drill 3/8"

Blister dimension: 21x29 cm

Weight: 1,02 kg

Package: 1 pcs

See features on page 64 - PNEUMATIC TOOLS section

**GR/E**

Ref. 62006/B

Air grease gun

Blister dimension: 27x49 cm

Weight: 1,5 kg

Package: 1 pcs

See features on page 61 - COMPRESSED AIR GUNS section

**SET OF 4 TIPS**

Ref. 62003/B

Set of 4 tips + spring

Blister dimension: 21x29 cm

Weight: 520 g

Package: 1 pcs

See features on page 65 - PNEUMATIC TOOLS section

**SET OF SLEEVES**

Ref. 62001/B

Set of 10 hexagonal sleeves 1/2"

Blister dimension: 21x29 cm

Weight: 1,4 Kg

Package: 1 pcs

See features on page 65 - PNEUMATIC TOOLS section

**BOTTLE OF OIL**

Ref. 62008/B

Bottle of oil

Blister dimension: 11x17 cm

Weight: 132 g

Package: 1 pcs

See features on page 65 - PNEUMATIC TOOLS section



# 5 PIECES KIT IN BLISTER

## PROFESSIONAL KIT 1

Ref. 50500

Kit of 5 accessories for compressors including:

- ① - Paint spray gun mod. **UR PLUS** Ø 1,4
- ② - Washing gun mod. **NE**
- ③ - Inflating gun mod. **PG/S**
- ④ - Blow gun mod. **PA/4N**
- ⑤ - Spiral hose with fittings

## PROFESSIONAL KIT 1/CEE

Ref. 50500/O

Kit of 5 accessories same as PROFESSIONAL KIT 1 but with:

- EEC standards inflating gun mod. **PG/S CEE/OM**

Blister dimension: 45x34,5 cm

Weight: 2,170 kg

Package: 10 pcs



## PROFESSIONAL KIT 2

Ref. 50505

Kit of 5 accessories for compressors including:

- ① - Paint spray gun mod. **UR/S PLUS** Ø 1,4
- ② - Washing gun mod. **NE**
- ③ - Inflating gun mod. **PG/S**
- ④ - Blow gun mod. **PA/4N**
- ⑤ - Spiral hose with fittings

## PROFESSIONAL KIT 2/CEE

Ref. 50505/O

Kit of 5 accessories same as PROFESSIONAL KIT 2 but with:

- EEC standards inflating gun mod. **PG/S CEE/OM**

Blister dimension: 45x34,5 cm

Weight: 2,390 kg

Package: 10 pcs



## SEKUR KIT 1

Ref. 100010

Kit of 5 accessories for compressors including:

- ① - Paint spray gun mod. **PRIMA** with suction cup Ø 1,5
- ② - Washing gun mod. **NE**
- ③ - Inflating gun mod. **PG/S**
- ④ - Blow gun mod. **PA**
- ⑤ - Spiral hose with fittings

## SEKUR KIT 1/CEE

Ref. 100010/O

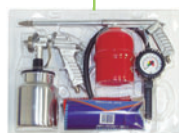
Kit of 5 accessories same as SEKUR KIT 1 but with:

- EEC standards inflating gun mod. **PG/S CEE/OM**

Blister dimension: 45x34,5 cm

Weight: 2,100 kg

Package: 10 pcs



## SEKUR KIT 2

Ref. 100020

Kit of 5 accessories for compressors including:

- ① - Paint spray gun mod. **PRIMA** with gravity cup Ø 1,5
- ② - Washing gun mod. **NE**
- ③ - Inflating gun mod. **PG/S**
- ④ - Blow gun mod. **PA**
- ⑤ - Spiral hose with fittings

## SEKUR KIT 2/CEE

Ref. 100020/O

Kit of 5 accessories same as SEKUR KIT 2 but with:

- EEC standards inflating gun mod. **PG/S CEE/OM**

Blister dimension: 45x34,5 cm

Weight: 2,020 kg

Package: 10 pcs



# 6 FUNCTIONS KIT IN SUITCASE

## ESA KIT

Ref. 50516

6 functions modular kit containing.

Including:

- ① - Paint spray gun mod. **PRIMA** with suction cup Ø 1,5
- ② - Spiral hose with fittings
- ③ - Blow gun mod. **PA/4N** with safety nozzle in compliance with OSHA (USA) standards

**PA/4N + OSHA nozzle** ideal to generate:

- ④ - Washing gun for naphtha
- ⑤ - Air/water gun
- ⑥ - Inflating gun

Clear suitcase: 30x35x12 cm

Weight: 2 Kg



# AIR COMPRESSED ACCESSORIES

## MICROPRESSURE REDUCER

Ref. 61000/B

Micropressure reducer

Blister dimension: 20x20,5 cm

Weight: 330 g

Package: 6 pcs

See features on page 87 - FITTINGS section



## SAFETY VALVE

Ref. 61050/B

Safety valve

Blister dimension: 7x14 cm

Weight: 100 g

Package: 12 pcs

See features on page 88 - FITTINGS section



## AIR PRESSURE SWITCH

Ref. 61060/B

Monophase 4 HP air pressure switch

Blister dimension: 20x20,5 cm

Weight: 360 g

Package: 6 pcs

See features on page 88 - FITTINGS section



## SPIRAL HOSE

Ref. 60350/B

Nylon spiral hose Ø 6x8, 5 m long with bayonet connections for milled nuts and protective spring

Blister dimension: 20x20,5 cm

Weight: 150 g

Package: 6 pcs





# AUTOMATIC COUPLINGS

## X100 S - Male

Ref.	Thread	Thread
10501/SB	I	1/4"
10502/SB	I	3/8"



Blister dimension: 7x14 cm - 2 pieces for blister - package: 12 pcs

## X300 U - Male

Ref.	Thread
10201U/B	1/4"
10202U/B	3/8"



Blister dimension: 7x14 cm - 1 piece for blister - package: 12 pcs

## X100 S - Female

Ref.	Thread	Thread
10601/SB	I	1/4"
10602/SB	I	3/8"



Blister dimension: 7x14 cm - 2 pieces for blister - package: 12 pcs

## X300 U - Female

Ref.	Thread
10211U/B	1/4"
10212U/B	3/8"



Blister dimension: 7x14 cm - 1 piece for blister - package: 12 pcs

## X100 S - For rubber hose

Ref.	Thread	Øint.-Øext.
10703/SB	I	6x14
10707/SB	I	8x17



Blister dimension: 7x14 cm - 2 pieces for blister - package: 12 pcs

## X300 U - With rest

Ref.	Ø int.
10221U/B	6
10222U/B	8



Blister dimension: 7x14 cm - 1 piece for blister - package: 12 pcs

## X100 S - For nylon hose with spring

Ref.	Standard	Øint.-Øext.
10801/SB	I	6x8
10802/SB	I	8x10



Blister dimension: 7x14 cm - 1 piece for blister - package: 12 pcs

## X300 U - For rubber hose

Ref.	Ø int.
10231U/B	6x14
10232U/B	8x17



Blister dimension: 7x14 cm - 1 piece for blister - package: 12 pcs

## X100 S - With rest

Ref.	Standard	Ø int.
10731/SB	S	6
10733/SB	S	8



Blister dimension: 7x14 cm - 2 pieces for blister - package: 12 pcs

## X300 U - For rubber hose

Ref.	Ø int.
10241U/B	6x14
10242U/B	8x17



Blister dimension: 7x14 cm - 1 piece for blister - package: 12 pcs

# STEEL FITTINGS

## Male

**FOR X100 S and X300 U**

**ONLY FOR 300 U and X300**

Ref. I	Thread	Ref. S	Thread	Ref. USA	Thread	Ref. GB	Thread	Ref. D	Thread
11001/B	1/4"	11011/B	1/4"	11021/B	1/4"	11031/B	1/4"	11041/B	1/4"
11002/B	3/8"	11012/B	3/8"	11022/B	3/8"	/	/	11042/B	3/8"



Blister dimension: 7x14 cm - 2 pieces for blister - package: 12 pcs

## Female

Ref. I	Thread	Ref. S	Thread	Ref. USA	Thread	Ref. GB	Thread	Ref. D	Thread
11101/B	1/4"	11111/B	1/4"	11121/B	1/4"	11131/B	1/4"	11141/B	1/4"
11102/B	3/8"	11112/B	3/8"	11122/B	3/8"	/	/	11142/B	3/8"



Blister dimension: 7x14 cm - 2 pieces for blister - package: 12 pcs

## For rubber hose

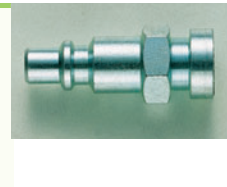
Ref. I	Øint.-Øext.	Ref. S	Øint.-Øext.	Ref. USA	Øint.-Øext.	Ref. GB	Øint.-Øext.	Ref. D	Øint.-Øext.
11183/B	6x14	/	/	/	/	/	/	11198/B	6x14
11187/B	8x17	/	/	/	/	/	/	11199/B	8x17



Blister dimension: 7x14 cm - 2 pieces for blister - package: 12 pcs

## Bayonet

Ref. I	Ref. S	Ref. USA	Ref. GB	Ref. D
11260/B	/	/	/	/



Blister dimension: 7x14 cm - 2 pieces for blister - package: 12 pcs

## For nylon hose with spring

Ref. I	Øint.-Øext.	Ref. S	Øint.-Øext.	Ref. USA	Øint.-Øext.	Ref. GB	Øint.-Øext.	Ref. D	Øint.-Øext.
11201/B	6x8	/	/	/	/	/	/	/	/
11202/B	8x10	/	/	/	/	/	/	/	/



Blister dimension: 7x14 cm - 2 pieces for blister - package: 12 pcs

## With rest

Ref. I	Ø int.	Ref. S	Ø int.	Ref. USA	Ø int.	Ref. GB	Ø int.	Ref. D	Ø int.
/	/	11301/B	6	11311/B	6	/	/	11341/B	6
/	/	11303/B	8	11313/B	8	/	/	11343/B	8

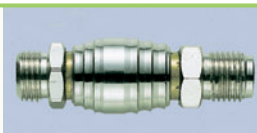


Blister dimension: 7x14 cm - 2 pieces for blister - package: 12 pcs

# FITTINGS

## Sliding cock - male

Ref.	Thread
12341/B	1/4"



Blister dimension: 7x14 cm - 1 piece for blister - package: 12 pcs

## Drain cock - maschio

Ref.	Thread
12372/B	3/8"
12373/B	1/2"



Blister dimension: 7x14 cm - 2 pieces for blister - package: 12 pcs

## Bayonet connection with rest

Ref.	Ø int. hose
13060/B	6
13062/B	8



Blister dimension: 7x14 cm - 2 pieces for blister - package: 12 pcs

## Bayonet connection male

Ref.	Thread
13011/B	1/4"



Blister dimension: 7x14 cm - 2 pieces for blister - package: 12 pcs

## Bayonet connection for rubber hose

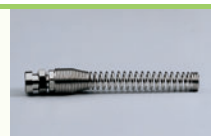
Ref.	Ø int. - Ø ext.
13023/B	6x14
13027/B	8x17



Blister dimension: 7x14 cm - 1 piece for blister - package: 12 pcs

## Bayonet connection for nylon hose

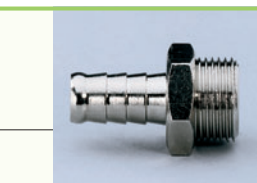
Ref.	Ø int. - Ø ext.
13181/B	6x8



Blister dimension: 7x14 cm - 2 pieces for blister - package: 12 pcs

## Male 1/4" connection with rest for hose

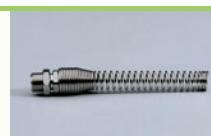
Ref.	Thread	Ø int. hose
13234/B	1/4"	6
13236/B	1/4"	8



Blister dimension: 7x14 cm - 2 pieces for blister - package: 12 pcs

## Male 1/4" connection for nylon hose

Ref.	Thread	Ø int. - Ø ext.
13201/B	1/4"	6x8



Blister dimension: 7x14 cm - 2 pieces for blister - package: 12 pcs

## Milled nut thread

Ref.	Thread
14000/B	1/4"



Blister dimension: 7x14 cm - 2 pieces for blister - package: 12 pcs


## Female 1/4" fitting with milled nut

Ref.	Thread
14010/B	1/4"




Blister dimension: 7x14 cm - 2 pieces for blister - package: 12 pcs

### Male 1/4" fitting with milled nut

Ref.	Thread	
14021/B	1/4"	


Blister dimension: 7x14 cm - 2 pieces for blister - package: 12 pcs

### T fitting with milled nut

Ref.	Thread	
14040/B	1/4"	


Blister dimension: 7x14 cm - 1 pieces for blister - package: 12 pcs

### Conical nipple

Ref.	Thread	
14131/B	1/4" - 1/4"	
14132/B	3/8" - 3/8"	
14134/B	1/8" - 1/4"	
14137/B	1/4" - 3/8"	
14138/B	3/8" - 1/2"	


Blister dimension: 7x14 cm - 2 pieces for blister - package: 12 pcs

### Extension

Ref.	Thread	
14175/B	1/4" - 1/4"	


Blister dimension: 7x14 cm - 2 pieces for blister - package: 12 pcs

### L fitting

Ref.	Thread	
14301/B	M 1/4" - F 1/4"	
14311/B	F 1/4" - F 1/4"	
14316/B	M 1/4" - F 1/4"	


Blister dimension: 7x14 cm - 2 pieces for blister - package: 12 pcs

### Double milled nut

Ref.	Thread	
14030/B	1/4"	

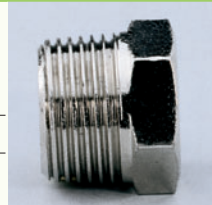
Blister dimension: 7x14 cm - 1 piece for blister - package: 12 pcs

### Cylindrical plug

Ref.	Thread	
14251/B	1/4"	


Blister dimension: 7x14 cm - 2 pieces for blister - package: 12 pcs

### Conical reduction

Ref.	Thread	
14152/B	3/8" - 1/4"	
14153/B	1/2" - 3/8"	
14154/B	1/2" - 1/4"	


Blister dimension: 7x14 cm - 2 pieces for blister - package: 12 pcs

### Double female

Ref.	Thread	
14201/B	1/4" - 1/4"	
14202/B	3/8" - 3/8"	
14207/B	1/4" - 3/8"	


Blister dimension: 7x14 cm - 2 pieces for blister - package: 12 pcs

### T fitting

Ref.	Thread	
14341/B	1/4"	


Blister dimension: 7x14 cm - 2 pieces for blister - package: 12 pcs

### Y fitting female/male/female

Ref.	Thread	
14321/B	1/4"	

Blister dimension: 7x14 cm - 2 pieces for blister - package: 12 pcs

### Male plug "D" with milled nut

Ref.	Thread	
11045/B	1/4"	

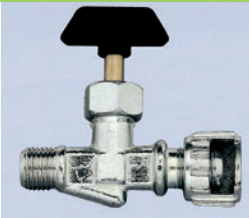
Blister dimension: 7x14 cm - 2 pieces for blister - package: 12 pcs

### Bayonet seals

Ref.	Thread	
60920/B	1/8"	


Blister dimension: 7x14 cm - 10 pieces for blister - package: 12 pcs

### Needle air line tap male with milled nut.

Ref.	Thread	
12010/B	1/4"	

Blister dimension: 7x14 cm - 1 piece for blister - package: 12 pcs

### Mini ball valve male-male

Ref.	Thread	
12131/B	1/4	

Blister dimension: 7x14 cm -1 piece for blister - package: 12 pcs

# DISPLAYS

Specifically designed to display products and keep them tidy, Walmec displays enrich the sales point, thanks to their functionality and attractive design.

From the blow guns display to the original and practical rotating shelf display for fittings.

## VENTO

Ref. 60949

Carton display containing:

- 5 PA/6 Ref. 50065
- 3 PA/6L Ref. 50066
- 1 PA/6LL Ref. 50067

Display dimension: 43x25 cm x h 41 cm  
Weight: 2,8 Kg



## JUNIOR

Display for fittings with 4 shelves containing:

- X 100 S couplings - fittings - plugs - connections

With fittings - weight 14,5 Kg

Ref. 60930

Empty - weight 4 Kg

Ref. 60930/V

Display dimension: 35x80 cm



## MASTER

Display for fittings with 7 shelves containing:

- X 300 U couplings - fittings - plugs - connections

With fittings - weight 31 Kg

Ref. 60931

Empty - weight 6 Kg

Ref. 60931/V

Display dimension: 35x150 cm



## PROFESSIONAL

Display for fittings with 11 shelves containing:

- X 300 U couplings - fittings - plugs - connections
- 12 PA/4N blow guns
- 6 PG/S inflating guns

With fittings - weight 45,5 Kg

Ref. 60932

Empty - weight 9 Kg

Ref. 60932/V

Display dimension: 35x193 cm



## ROLLO

Ref. 60930/RR

Tidy keeper on swiveling wheels.

Featuring: 4 coloured shelves, 4 T shape dividers

Shelves: polypropylene

Handle: handy grip for carrying

Wheels: 4 swiveling wheels

Display dimension: 35x80 cm

Weight: 4,5 Kg







This image shows a single sheet of white paper with horizontal ruling lines. The lines are evenly spaced and run across the width of the page. There are no margins, text, or other markings on the paper.

# General sales conditions

## Validity

The following standardised general sales conditions govern the sales agreements, and are integral part of our agreements even when orders are collected by fax, by phone, by e-mail, via internet or verbally.

The provisions, the conditions and any other incidental contractual negotiations, in the case they depart from these general conditions, must be stated and accepted in written, otherwise they will be invalid and without effectiveness.

This catalogue cancels and replaces the previous ones and it may be changed at any time without notice and without this entails any right by the Customers to receive compensation.

## Offers and Finalisation of the Contract

Technical descriptions and pictures are reported purely as an indication of the characteristic of the Product, but they are not in themselves promises or essential quality of the supplied Products and therefore they may be changed at any time up to the finalisation of the contract. Requests for quotations (Offers) are not in any case a "confirmed sales order". Further to said requests, Walmec S.p.A. will proceed exclusively in order to provide the required information.

Offers made by Walmec S.p.A. are not binding for the seller. The order made by the customer is binding and irrevocable according to article 1329 Italian Civil Code and for a period of 8 (eight) days after its receipt. Walmec S.p.A. has the right to accept the order either by written confirmation or by starting the execution of the contract, by shipping the ordered Products. The contract is believed to be finalised at Walmec S.p.A.'s commercial offices, via Trieste 10, Santa Lucia di Piave, Treviso, Italy. All orders transmitted are always to be considered "subject to approval" by Walmec S.p.A.

**Orders for a total value lower than EUR 500.00 (five-hundred/00) are not accepted, except in the case of orders made solely for spare parts which will only be despatched on cash in advance with carried prepaid.**

## Prices and Terms of Payment

Unless otherwise written agreement entered by the Parties, Walmec S.p.A. applies to the finalised contract prices quoted on its catalogues and on its price lists effective at the time of the receiving of the order. Prices are quoted net of V.A.T. due according to the Italian Law in force.

Title of Products sold is of Walmec S.p.A. until the full and total payment, and any down payment made will be retained as reimbursement of damages and expenses.

Invoices issued by Walmec S.p.A. must be settled within the written terms agreed by the Parties, at the creditor's domicile, according to Article 1182 Italian Civil Code, even if the payment is made by bill of exchange or cash order.

Being expired the stated payment term, Walmec S.p.A. is authorised to draw a bill without any notice.

In case of late payment beyond the terms agreed and specified on the invoice, interest will be charged and it will be equal to the legal interest rate increased by seven points and related expenses.

In case of late payment Walmec S.p.A. has the right to require the fulfilment of any pending order by asking either advance payment or cash on delivery.

**Freight charges will be accrued on the invoice except different agreement by the Parties. Packaging is billed at cost and it is not accepted in return.**

## Delivery Terms

Walmec S.p.A., in case of orders of remarkable quantity, has the option to make partial delivery.

Delivery terms are never binding; a possible missed delivery either fully or partially, or a simple delay, does not constitute right to recover any damage unless it was explicitly agreed in written form and accepted by the Parties.

In case the Parties have written agreed the Customer will make a down payment, the delivery term starts from the receipt of the agreed sum.

## Shipping Risks

Products are shipped with all the risks in charge of the Customer, even if the Products are sold free domicile. Unless otherwise agreed by the Parties in written form, Walmec S.p.A. ships the Products to the address indicated by the Customers.

If the shipment is delayed because of reasons attributable to the customer, the risk in the title or for deterioration of the Products is in charge of the customer starting from the day when Walmec S.p.A. informs the customer to be ready to the shipment of the Products.

In all cases of force-majeure events, such as strikes, stoppage of transport, etc., Walmec S.p.A. will be exempted by its duty concerning the shipment, whereas such events could not be claimed by the customer as reason to annul the order.

Walmec S.p.A. will not bear any responsibility for any possible shortage of materials or damages of the parcels due to shipment made using parcels or train package. We advise our customers to check the quantity of the goods and the shipment conditions before taking delivery of the Products.

## Title Retention Agreement

Walmec S.p.A. has the title on the supplied Products up to the integral payment of the due amount and of any other sum due by the Customer for any reason.

Risks and responsibility related to the use of the supplied Products are in charge of the customer starting from the time of the delivery.

## Guarantee for Product Defects

The customer, at the time of the delivery, has the burden to check if the supplied Products match with the submitted order both in quantity and quality and if they are free from defects noticed with a quick view using the normal diligence.

Complaints for damages caused by the transport shall be sent directly to the carrier at the time of the receiving of the Product by specific note on the forwarding agent's delivery note, giving notice to Walmec S.p.A. within and not later than 8 (eight) days. Being expired said term, Products are considered received and accepted.

Walmec S.p.A. guarantees the conformity of the supplied Products according to what is reported in the catalogue. Products supplied are covered by 12 (twelve) months warranty period, starting from the delivery date, against construction and material defects. In any case the guarantee is not applicable if the customer is not able to prove having made a correct use, maintenance and preservation of the Products. Walmec S.p.A. denies any liability for damages to persons, animals and things due to an inaccurate and improper use of the Products.

## Repairs

Shipments for repairs must be delivered carriage paid to Walmec premises located in via Trieste 10, Santa Lucia di Piave, Treviso, Italy, and will be sent back DDU charging the freight costs on the invoice. Repairs made during the warranty period will be sent back DDU.

## Applicable Law and Jurisdiction

Any dispute arising in connection with the present contract shall be finally settled in front of the Treviso Court. This contract is governed by the Italian Law.



**WALMEC SPA**  
**WALMEC ITALY HEADQUARTERS**

VIA TRIESTE 10, 31025 - S LUCIA DI PIAVE - (TV) - ITALY  
TEL +39 0438 6611  
FAX +39 0438 661333  
E-MAIL: [WALMEC@WALMEC.COM](mailto:WALMEC@WALMEC.COM)  
WEB: [WWW.WALMEC.COM](http://WWW.WALMEC.COM)

**PRODUCTION PLANT**

VIALE DELLA VITTORIA 33, 24054 - CALCIO - (BG) - ITALY